

# BERNINA MACHINES AT A GLANCE

SEWING, EMBROIDERY, QUILTING & OVERLOCKING 2024/2025



**BERNINA** *made to create*

**1893** Karl Friedrich Gegauf, the founding father of BERNINA, invented the hem-stitch sewing machine. This machine could sew 100 stitches a minute, causing a great sensation.

**1928** His son Fritz Gegauf took over the factory in Steckborn in Switzerland. He was an engineer through and through whose ideas shaped the company and whose inventions are still in use today.

**1932** Fritz invented the first household sewing machine and named it after his favourite mountain in the Eastern Alps in Switzerland – Bernina. And not only that! He then changed the name of the whole company from Gegauf & Co. to BERNINA.

**1938** Under Fritz's direction, the first zigzag sewing machine from BERNINA came onto the market.

**1954** Another important milestone occurred: BERNINA launched the first machine with the patented clip-on presser foot and buttonhole sewing function onto the market.

**1963** Fritz's daughter, Odette Ueltschi-Gegauf, took over the company and brought out a sewing machine with a novel presser foot lifter. The Free Hand System, which raises the presser foot via a knee lifter, is still an important feature of almost every BERNINA today.

**1971** A BERNINA with electric foot control followed, and in 1981 the first model with the stretch stitch function came out.

**1988** Hanspeter Ueltschi, great-grandson of the company's founder, took over the company from his mother Odette and still manages BERNINA today. Under his leadership, BERNINA has developed into an iconic brand among passionate quilters throughout the world.

**Until 2010** BERNINA made further important innovative leaps, culminating in the launch of the world's first sewing computer with a Microsoft Windows operating system in 2002.

**2012** The patented BERNINA Hook was born – an amazing innovation from our Swiss engineers. It combines all the advantages of the world's previous two best hook technologies.

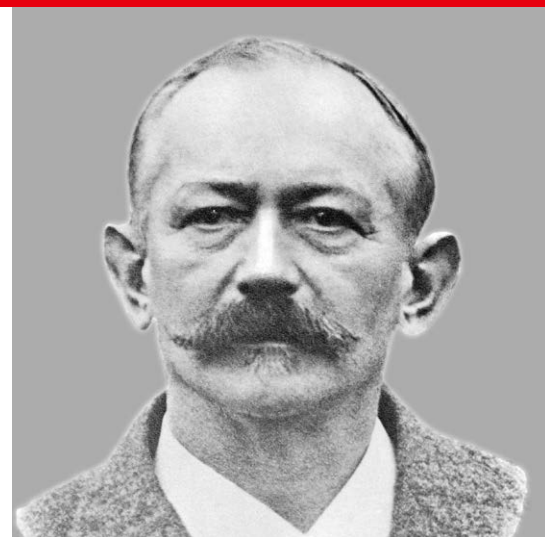
**2015** BERNINA went into a new line of business, with two completely new long-arm quilting machines including frames.

**2017** New embroidery functions were launched by BERNINA on the new 5 Series, the B 790 PLUS and the B 880 PLUS.

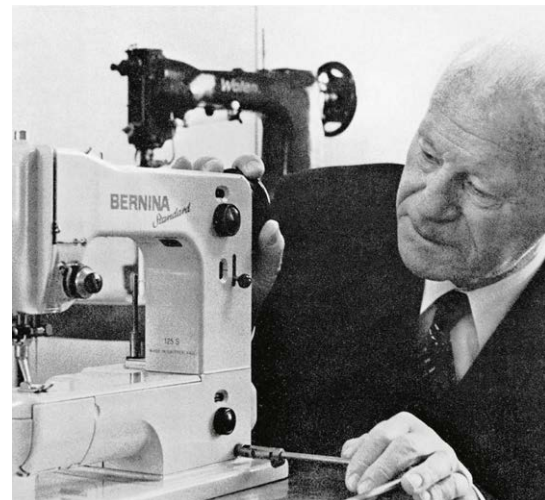
**2018** BERNINA is celebrating its 125<sup>th</sup> anniversary – with special limited edition models with a gold faceplate and two genuine gold-plated presser feet.

**2020** BERNINA presents a new milestone and launches three revolutionary overlock machines: the L 850, L 860 and L 890. All models feature the unique One-Step BERNINA Air Threader.

**2023** The B 790 PRO is the latest innovation on the market. It features laser and WiFi technology and can be connected to an app. BERNINA will continue to be a family business in the future; the 5<sup>th</sup> generation is part of the management and the 6<sup>th</sup> generation, Philipp Ueltschi's son, will be one year old.



Karl Friedrich Gegauf



Fritz Gegauf



Odette Ueltschi-Gegauf



# We are a Swiss family business

BERNINA has stood for Swiss tradition since 1893. BERNINA was founded by my great-grandfather, the inventor of the hemstitch sewing machine. The corporate philosophy has remained the same over the years: we strive for the highest quality workmanship and aim to offer our customers an unrivalled sewing experience.

Sewing is about making something of your own, something beautiful. The focus is on individuality, whether you are sewing, embroidering, overlocking or quilting. But the do-it-yourself trend is also a trend towards sustainability, as many people see sewing as a conscious alternative to buying mass-produced clothes. Over the last couple of years, many people have discovered or rediscovered sewing as a fulfilling hobby and a meaningful way to spend time at home, which we are delighted about, of course. We have exactly the same philosophy! Our high-quality, durable products are intended for creative people who really enjoy sewing and for whom we create many "Big Days" with our BERNINA machines.

Caring for our customers is a top priority for us. So as well as training our specialist dealers, it is also very important to us to provide information, inspiration and tips and advice relating to sewing. Around the world, there is great enthusiasm for BERNINA, and the feedback is positive. This enjoyment and loyalty is the best incentive and the greatest motivation for me.



Sincerely,  
Hanspeter Ueltschi,  
Owner of BERNINA



## Contents

<b>The BERNINA product range at a glance</b>	4–5
<b>Exclusive features and innovations</b>	6–7
<b>Sewing, quilting and embroidery machines</b>	
BERNINA 880 PLUS	8–11
BERNINA 7 Series	12–15
BERNINA 5 Series	16–19
BERNINA 4 Series	20–23
BERNINA 3 Series	24–27
<b>Overlocker</b>	
BERNINA L 890 / L 860 / L 850	28–33
BERNINA L 460 / L 450	34–35
<b>Longarm quilting machines</b>	
BERNINA Q 24 / Q 20	36–37
BERNINA Q 16 PLUS / Q 16	38–39
<b>BERNINA Embroidery Software 9</b>	40–43
<b>Feature overview</b>	
Overlockers	44–45
Sewing, quilting and embroidery machines	46–47


# Which BERNINA is right for me?

There is one particular characteristic that is apparent in all BERNINA machines\* – the quality. Regardless of size, quality is always our ultimate goal. The models differ in how they are used and in their range of functions. But how do you decide which BERNINA model is right for you? Find out more here: [bernina.com/machinerearch](http://bernina.com/machinerearch)

 Sewing  Embroidery  Embroidery-enabled  Quilting

## CUTTING EDGE OF SEWING AND EMBROIDERY



B 790 PRO   



B 770QE PLUS   



B 735  

## THE CLEVER SEWING EXPERTS





B 590   




B 570QE   



B 540/B 535  

## THE CREATIVE PARTNERS




B 480/B 485 






B 475QE  



B 435 

## FIRST-CLASS SEWING, QUILTING AND EMBROIDERING




B880 PLUS   




B700 




B500 

## THE STYLISH, COMPACT MACHINES



B335 



B325 

## THE VERSATILE OVERLOCKERS




L890   



L860 




L850 



L460 



L450 

 Overlock  Cover  Combo

# Exclusive features and innovations

The BERNINA name has always been synonymous with robustness and durability. Quality is evident in the precision of the stitches and the high needle penetration power when sewing thick fabrics. A wealth of exclusive and innovative functions and features and simple, intuitive operation sets BERNINA sewing machines apart from all others.

## Typically BERNINA

### **BERNINA HOOK**

The patented BERNINA Hook makes it possible to sew even longer stretches precisely, quietly and without interruption, with a stitch width of up to 9 mm. Its centrally located driver allows it to run exceptionally quietly and smoothly. It sews and embroiders with high precision at up to 1,000 stitches per minute. The Jumbo Bobbin of the BERNINA Hook holds up to 70% more thread than standard bobbins.

### **NEW BERNINA STITCHPRECISION<sup>2</sup>**

The B 790 PRO features the next generation BERNINA stitch**precision<sup>2</sup>** Technology that makes your sewing, quilting and embroidery experience quieter, more accurate and ... enjoyable!

### **BERNINA ADAPTIVE THREAD TENSION**

This innovation from BERNINA ensures the ideal thread tension as you sew, helping you to achieve outstanding stitch quality on both sides of the fabric. After you set the thread tension for the thread and fabric, the BERNINA Adaptive Thread Tension continuously checks it as you sew, adjusting it unobtrusively and automatically whenever necessary. The result: the finest sewing and embroidery quality, with no need to even press a button!

### **NEW AUTOMATIC NEEDLE THREADER**

The Automatic Needle Threader on the B 790 PRO helps you get started with a different thread, conveniently and quickly, every single time.

### **AUTOMATIC FOOT LIFTER**

The automatic foot lifter lowers the foot when you start sewing and raises it at the touch of a button.

### **ADJUSTABLE PRESSER FOOT PRESSURE**

The adjustable presser foot pressure feature ensures that the presser foot has the ideal pressure for the selected stitch. The default setting can be adjusted for specific materials.

### **AUTOMATIC THREAD CUTTER**

The automatic thread cutter trims the thread and lifts the needle and presser foot with just the touch of a button.

### **BERNINA DUAL FEED**

The BERNINA Dual Feed is especially helpful when sewing delicate materials. When activated, the Dual Feed feeds the material from both the top and bottom, letting you sew difficult fabrics evenly and carefully.

### **NEW BERNINA PINPOINT LASER**

The BERNINA Pinpoint Laser on the B 790 PRO marks your start and travel points as you sew and embroider.

### **BERNINA FREE HAND SYSTEM (FHS)**

The knee lifter lowers the feed dog and raises the presser foot simultaneously so that both hands are free to guide and manoeuvre the fabric.

### **BERNINA STITCH REGULATOR (BSR)**

The revolutionary presser foot for even stitch length in free-motion sewing. Effortlessly create beautiful, consistent straight or zigzag stitches.

### **TOTAL STITCH CONTROL**

Permanent or temporary altering of length, width and needle position of all stitches and other creative functions – even while sewing.

### **CREATIVE CONSULTANT**

The Creative Consultant displays the appropriate presser foot and needle, recommends a thread and automatically sets the thread tension for the desired stitch.

### **ON-SCREEN BUTTONHOLE MEASURING SYSTEM**

Simply hold the button to the screen and measure its diameter. The length of the buttonhole is automatically set and the buttonhole can be sewn as many times as wished.

## STITCH DESIGNER

The Stitch Designer on the B 880 PLUS and B 790 PRO allows you to create your own stitches by drawing your ideas directly on the touch screen. At the touch of a button, your design is converted into a stitch pattern. Built-in stitches can also be changed as desired. Add your custom-made stitch patterns to the stitch library for an even wider selection.

## PERSONAL PROGRAM

The default settings of the stitches can be customised and saved, making it easy to select your favourite settings whenever you want.

## PERSONAL MEMORY

Record your individually altered stitches for future retrieval. Saved until deleted from the personal program memory.

## BERNINA PRESSER FEET

BERNINA feet are unique as both the shafts and soles of BERNINA presser feet are made of solid metal. More than 70 feet, including some for special applications such as the BSR foot or the punching set, make the process of sewing, embroidery and quilting easier and open up new creative opportunities.

## NEW WIFI CONNECTIVITY AND BERNINA STITCHOUT APP

WiFi allows you to transfer embroidery designs from your BERNINA Embroidery Software 9 (optional) directly to your B 790 PRO, or the other way around. And thanks to the new BERNINA Stitchout App, the embroidery process can be monitored on your smartphone.

## NEW CUSTOMISABLE QUILT DESIGNS

Quilt like a PRO. The new Customisable Quilt Designs (.bqm) bring the functionality of professional longarm quilting to your embroidery machine (B 790 PRO only).

## PINPOINT PLACEMENT

The 2-Point Placement and the new 4-Point Placement (B 790 PRO only) are great functions for the exact positioning and alignment of embroidery designs.

## INVISIBLE & SMART SECURE AND INDIVIDUAL CUTTING

The Smart Secure function conveniently adds tie-on/off stitches to a design if none are pre-programmed. And the Invisible Secure makes the tie-on/off formation completely invisible. The cutting of jump stitches at every length can be set individually.

## EMBROIDERY CONSULTANT

The Embroidery Consultant chooses a sample motif for the desired application and helps with the choice of needle, foot and stabiliser.

## AUTOMATIC HOOP RECOGNITION

Automatically recognises the embroidery hoop used as soon as it is fitted onto the embroidery module on the sewing machine.

## FREARM EMBROIDERY

Easy freearm embroidery with all embroidery hoops without additional tools. For embroidering tubular items such as trouser legs, T-shirts, onesies, etc.

## SMART DRIVE TECHNOLOGY (SDT)

The new advanced Embroidery Modules with BERNINA Smart Drive Technology (SDT) offer enhanced stitch quality, smoother and quieter movement and up to 55% higher embroidery speed (L module only).

# #A BIG DAY



Scan the QR code to discover  
BIG DAYS from the BERNINA  
Community.

## #ABIGDAY

There are days when you are especially happy because you accomplished or just started something that you wanted to do for a long time. Or because you're taking home your long-awaited dream sewing machine!

What did your #ABIGDAY look like? How do you feel when you finish that final hem or master a new technique? Or start something you have never dared do before? Everyone has their own personal sewing story. And we want to hear yours!

Tell us about your #ABIGDAY involving creative sewing with your BERNINA! We look forward to seeing lots of great posts on social media. Use the hashtag #ABIGDAY and put your post on Instagram or Facebook!

# B 880 PLUS

## The ultimate sewing machine

The ultimate in sewing technology: The BERNINA 880 PLUS is the queen of BERNINA sewing and embroidery machines. It features a huge selection of stitches, stitch patterns, lettering and embroidery designs, as well as the most modern software and sophisticated functions. Ease effortlessly into your work with the automatic threading system, the BERNINA Stitch Regulator and the BERNINA Dual Feed, and appreciate the needle penetration power when working with thick materials, the high speed and the extra large working area. Innovations such as the Colour Wheel, Shape Designer and Stitch Designer help you create your own designs and stitches. The advanced Embroidery Module L with Smart Drive Technology (SDT) is included as standard with the B 880 PLUS. The BERNINA 880 PLUS is the perfect sewing and embroidery machine for those with a real passion for sewing, embroidery and quilting.

## 8 things you'll love:

- 1 BERNINA Stitch Regulator (BSR)
- 2 Extended Freearm
- 3 Jumbo Bobbin
- 4 BERNINA Dual Feed
- 5 Fully Automatic Features
- 6 Extensive Stitch and Design Library
- 7 Total Stitch Control
- 8 Endless Embroidery Options

### BERNINA STITCH REGULATOR (BSR)

The BSR provides assistance during free-motion sewing. It ensures that stitches are exactly the same length at variable sewing speeds, allowing beginners to gain confidence quickly and giving experienced quilters additional peace of mind. The BSR foot is included as standard and enables free-motion sewing at high speeds using straight or zigzag stitch.

### EXTENDED FREEARM

The B 880 PLUS includes a meticulously engineered extended freearm area with a full 12 inches (30 cm) of space to the right of the needle and 5 inches (12 cm) in height. With this extra-large area, you have the added benefit of a very large embroidery field, an extended space in which to expand your creativity.

### JUMBO BOBBIN

The unique Jumbo Bobbin provides up to 70% more thread capacity than standard bobbins, meaning fewer sewing and embroidering interruptions. In addition, the bobbin pops in and out at the touch of a finger.

### BERNINA DUAL FEED

The innovative BERNINA Dual Feed can even tame materials that are difficult to feed. It is easy to engage when needed and tucks completely out of the way when it's not.

### FULLY AUTOMATIC FEATURES

Imagine a machine that automatically responds to your needs. The presser foot lowers at the start of a seam and lifts again at the end. The B 880 PLUS will even cut the thread for you at the end of a seam or with a colour change in embroidery. The feed dog raises and lowers automatically for free-motion stitching and embroidery. And of course, fully automatic threading is yours at the touch of a button.

### EXTENSIVE STITCH AND DESIGN LIBRARY

The B 880 PLUS offers a wide selection of over 1,700 stitches, clearly arranged into categories. 462 embroidery designs and 11 built-in alphabets can be conveniently selected at the push of a button.

### TOTAL STITCH CONTROL

The stitch length and width and the needle position can be changed individually and saved. The Drag & Drop function enables individual stitches to be positioned precisely.

### ENDLESS EMBROIDERY OPTIONS

The design editing function allows embroidery motifs to be positioned, mirrored, rotated, combined and resized with ease. Create curved lettering effects, adjust the stitch density and incorporate decorative stitches into embroidery designs. Automatically colour-sort complex combinations, preview alternative colour combinations on screen using the Colour Wheel, and save everything to your machine or a USB stick. Would you like to embroider borders? The Endless Embroidery function guides you through the process. And finally, the Absolute Check feature helps you position your design precisely before embroidering.





## Embroidery at the highest level with the B 880 PLUS

The B 880 PLUS has exceptional functions to make embroidery even easier. In addition, it is compatible with all common file formats and has an integrated **Embroidery Consultant**, which helps you choose the right presser foot, the best needle and a suitable stabiliser for the fabric you are using.

Have you placed the fabric in the hoop at the wrong angle? No problem. With the **Pinpoint Placement / 2-Point Placement** function, you can position your design on the fabric exactly where you want it – quickly and precisely, even if the fabric has not been placed straight. There's no need to use the template any more.

The **Group & Ungroup** function helps you to edit multiple motifs. Group objects to edit them all at the same time, or ungroup them to edit objects individually. You can also adjust the layers of the embroidery sequence individually and **Undo & Redo** lets you easily make changes while editing an embroidery design.

Manual **trimming of jump stitches** on the top side of the fabric is a thing of the past. Jump stitches are cut automatically and thread tails are located on the underside of the fabric for fabulous looking embroidery. The cutting of jump stitches can be set, subject to design properties.

You'll achieve brilliant embroidery results thanks to the **Invisible Secure** function which makes the enhanced tie-on/off formation completely invisible. The **Smart Secure** function adds tie-on/off stitches to a design if none are pre-programmed. Or, simply turn this function off to keep the original tie-on/off stitch settings of the design.

With the **extra-large Embroidery Module L**, large-scale designs can be stitched out with ease. The module is equipped with the new **Smart Drive Technology (SDT)**. This provides an enhanced embroidery experience due to improved stitch quality, smoother and quieter movements and an embroidery speed that is up to 55% faster.



# B 880 PLUS

## STITCH DESIGNER

Create your own stitches with the Stitch Designer function. Draw your ideas directly on the touch screen and the B 880 PLUS converts the design into a stitch pattern. You can also alter existing stitches in the same way, so continually expanding your stitch library.

## SHAPE DESIGNER

The Shape Designer allows you to reproduce embroidery designs and reconfigure them with a single click. In combination with mirror-image effects, you can produce brand-new and unusual designs.

## COLOUR WHEEL

The Colour Wheel function lets you preview embroidery designs in various colours before you begin embroidering. This allows you to choose the most beautiful colours for your embroidery project.

## Advanced Embroidery Module L with Smart Drive Technology (SDT):

embroider more precisely, quietly and quickly, with a very large embroidery area of 15.7" x 10.2" (400 x 260 mm)



## Endless Embroidery:

Borders, sewing stitches, basting function, freearm embroidery

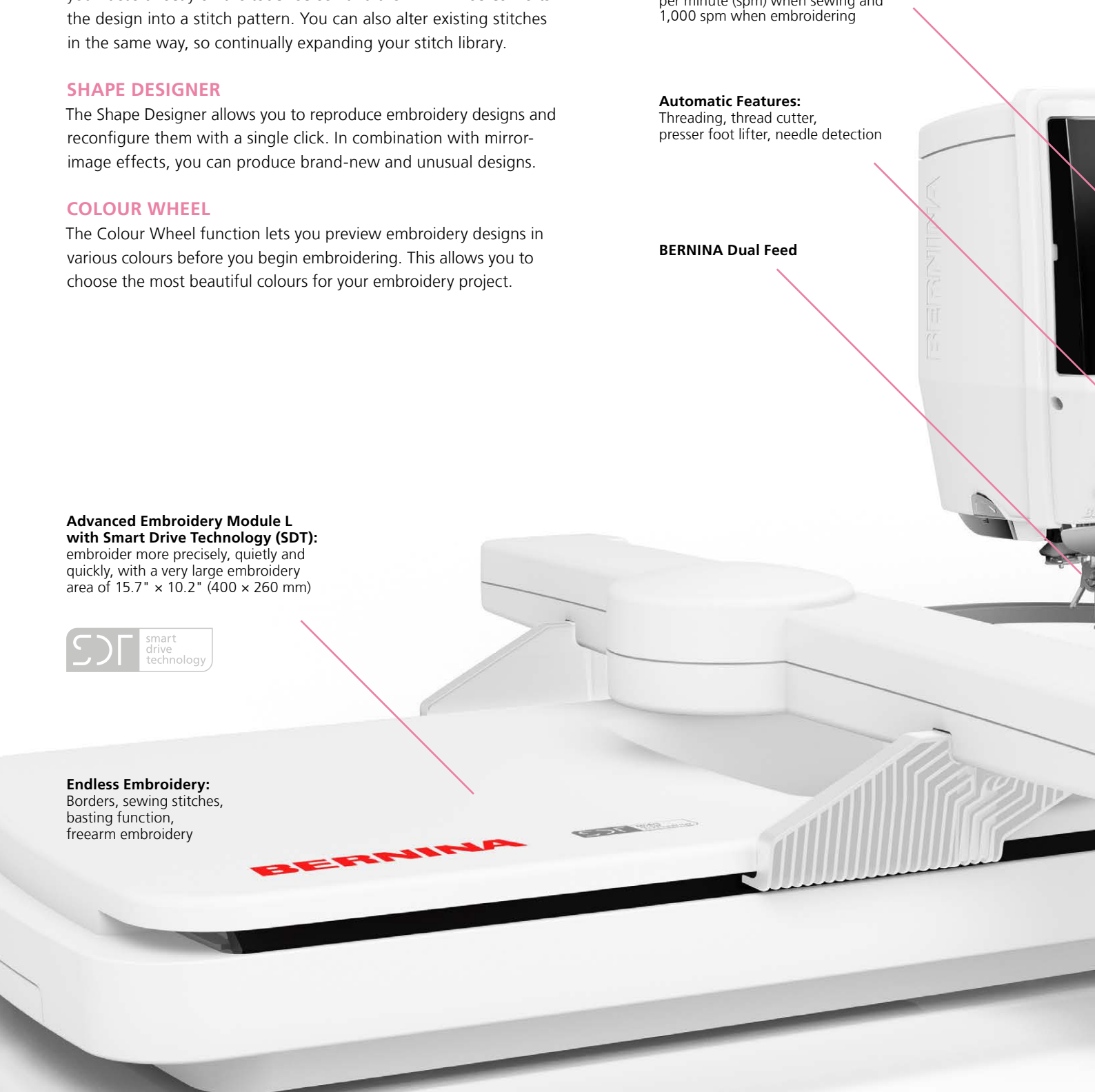
## Speed control:

with a maximum speed of 1,200 stitches per minute (spm) when sewing and 1,000 spm when embroidering

## Automatic Features:

Threading, thread cutter, presser foot lifter, needle detection

## BERNINA Dual Feed



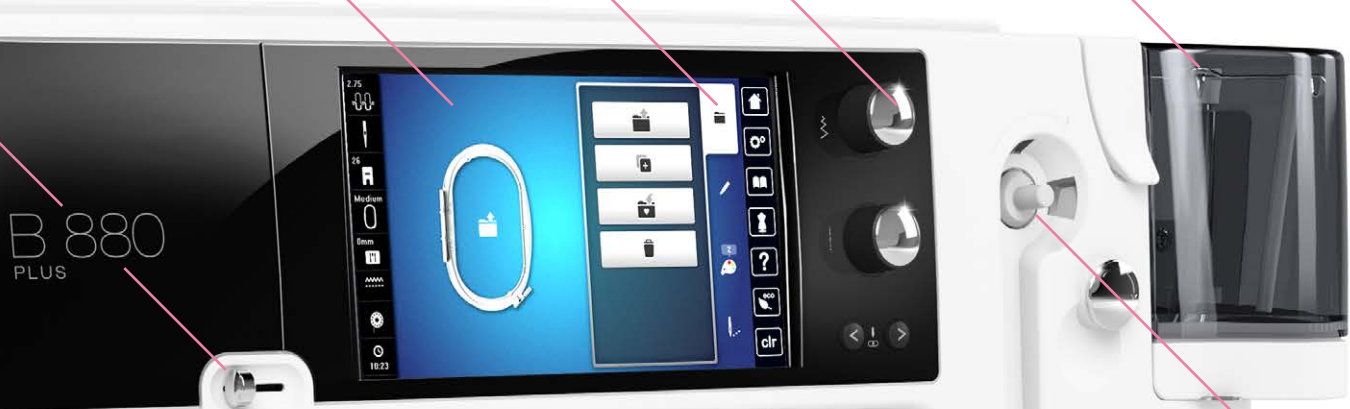


Sewing and embroidery tutorials and Creative Consultant

7" (17 cm) colour touch screen provides access to a wealth of innovative functions

Absolute Stitch Control via multi-function knobs

Triple spool holder



B 880 PLUS

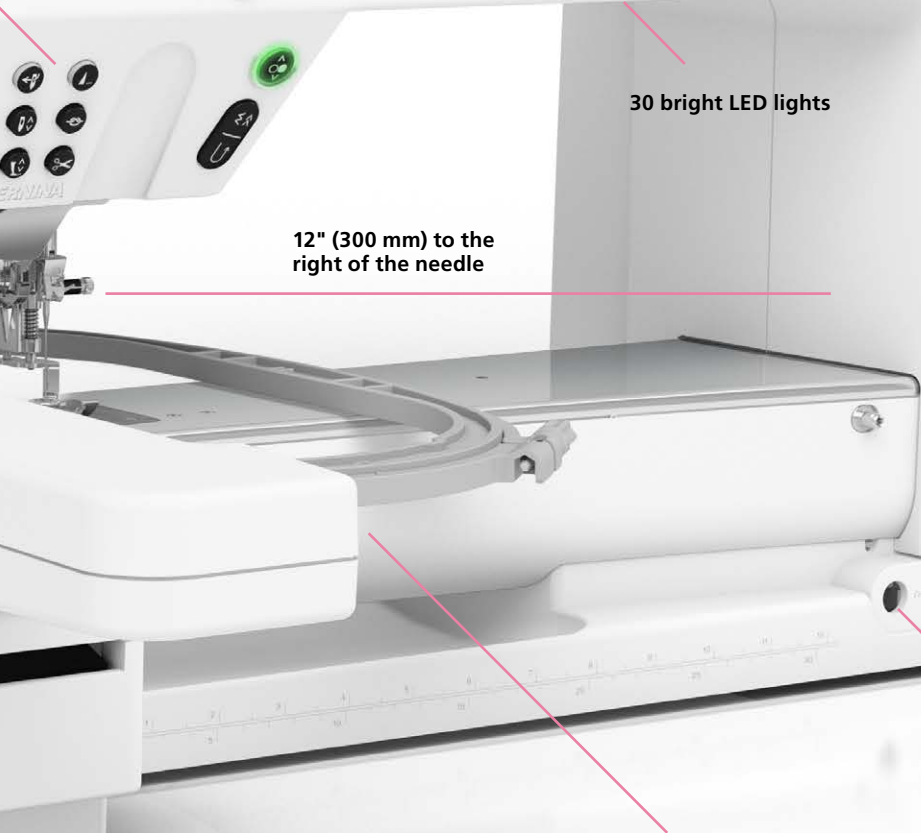
Front-loading bobbin winder

30 bright LED lights

12" (300 mm) to the right of the needle

BERNINA SWISS ENGINEERING

USB port



Jumbo Bobbin with up to 70% more thread capacity

BERNINA Free Hand System (FHS) for simultaneous operation of presser foot and feed dog

# BERNINA 7 Series

## Leading the Way in Sewing and Embroidery

The BERNINA 7 Series combines the finest technology with innovation and all the space you need. With the extended freearm all models are suitable for your largest sewing or quilting projects. The B 790 PRO is the sewing and embroidery professional of the 7 Series for even more sewing pleasure! Enriched with exciting new sewing, quilting and embroidery features and the next generation **stitchprecision<sup>2</sup>** Technology, the B 790 PRO is more precise than ever. Innovations including the BERNINA Pinpoint Laser, the Automatic Needle Threader, 4-Point Placement and WiFi Connectivity bring you the joy of precision and control!

The centrepiece of the 7 Series is the BERNINA Hook. It sews precisely, quickly and quietly with a stitch width of up to 9 mm (B 770 QE PLUS and B 790 PRO) or up to 5.5 mm (B 735). The BERNINA 700 is a dedicated embroidery machine and offers even more possibilities for embroidery lovers. The BERNINA 7 Series stands for user-friendliness and intuitive operation. A creative and embroidery consultant (except B 770 QE PLUS) answers questions directly on the screen and tutorials show important steps in short animations.

## What you will love about the 7 Series:

- 1 Sew and embroider with even greater ease
- 2 BERNINA Dual Feed & Walking Foot #50
- 3 Extended freearm for big projects
- 4 Total Stitch and Embroidery Control
- 5 Pinpoint Laser & Pinpoint Placement
- 6 BERNINA Stitch Regulator (BSR)
- 7 Beautiful, easy and flawless embroidery with SDT
- 8 Creative sewing and embroidery: Stitch Designer, Shape Designer & Colour Wheel (B 790 PRO only)
- 9 WiFi & BERNINA Stitchout App (B 790 PRO)
- 10 Invisible/smart securing & cutting of jump stitches
- 11 BERNINA Adaptive Thread Tension



“The day it all starts coming together.”

**SUSAN**, HOBBY QUILTER FROM THE USA

For Susan, it's a Big Day when her inspiration becomes a concept. With the many functions of her BERNINA 790 PRO and the embroidery software, she has all the tools she needs to create individual, personalised projects.

Scan QR code to  
watch the video.



### SEW AND EMBROIDER WITH EVEN GREATER EASE

The BERNINA 7 Series models carry out many tasks by themselves. The presser foot lowers automatically when you start sewing. Threading is semi-automatic or automatic (B 790 PRO only) and the thread is cut automatically when you reach the end of a seam or when you wish to change colours while embroidering.

### BERNINA DUAL FEED & WALKING FOOT #50

With the integrated BERNINA Dual Feed on the B 770 QE PLUS and B 790 PRO, the fabric is fed from above and below. Even smooth and delicate materials are moved forward evenly and carefully. The B 735 does not have the built-in Dual Feed. Instead, the Walking Foot #50 which serves the same purpose is a standard accessory for this model.

### EXTENDED FREEARM FOR BIG IDEAS

The BERNINA 7 Series includes a meticulously engineered extended freearm with 10" (254 mm) to the right of the needle. On the Embroidery Module L (included with the B 790 PRO and B 700, otherwise optional), extra-large designs can be stitched out precisely.

### TOTAL STITCH AND EMBROIDERY CONTROL

All the models in the BERNINA 7 Series offer the highest standard of Total Stitch and/or Embroidery Control. The stitch length, stitch width and needle position can be adjusted individually (except on the B 700). Personal settings can be saved and accessed at any time. Stitches and stitch patterns or stitch combinations as well as embroidery motifs can even be imported and exported via the USB port.

### PINPOINT LASER & PINPOINT PLACEMENT

The BERNINA Pinpoint Laser (B 790 PRO only) marks your start and travel points as you sew and embroider. Pinpoint Placement allows embroidery designs to be aligned and positioned easily and accurately. 4-Point Placement (B 790 PRO only) allows you to place your designs to exactly suit your project. Simply define four points on the fabric in the hoop and the design is placed exactly to fit in the created boundary. Or use Morphing to fit the design to irregular shapes. For 2-Point Placement, select two points on the screen and line them up with the markings on the hooped fabric. The design is aligned, rotated, resized and positioned as required. Perfect results can be achieved even with inaccurately hooped fabric. With the Lock Function, the size of the design is maintained during positioning.

### BERNINA STITCH REGULATOR (BSR)

The BSR foot is included as a standard accessory with the B 790 PRO and the B 770 QE PLUS. It is available as an option for the B 735. The BERNINA Stitch Regulator provides assistance when free-motion sewing and quilting using straight or zigzag stitches. It ensures that the stitches are always exactly the same length when sewing at variable sewing speeds. The B 790 PRO and B 770 QE PLUS also offer the BSR 3 Mode for basting and the KickStart function for sewing or quilting without the foot control.

### BEAUTIFUL, EASY AND FLAWLESS EMBROIDERY WITH SDT

All 7 Series models can sew and embroider; the B 700 is a dedicated embroidery machine. Embroidery designs can be positioned, mirrored, rotated and combined on all models. The design editing function offers additional options: you can create curved lettering effects, alter the stitch density and combine decorative stitches or alphabets with embroidery motifs. Complex combinations can be sorted by colour, and alternative colour options can be assessed. The finished design can be saved directly on the machine or onto a USB stick. Additional designs can be uploaded to the machine via the USB port or via WiFi (B 790 PRO only). With the Embroidery Module L, large-scale designs can be stitched out with ease. The module is equipped with the new Smart Drive Technology (SDT). This offers you an enhanced embroidery experience due to improved stitch quality, smoother and quieter movements and an embroidery speed that is up to 55% higher.

### CREATIVE SEWING AND EMBROIDERY: STITCH DESIGNER, SHAPE DESIGNER & COLOUR WHEEL (B 790 PRO ONLY)

The Stitch Designer lets you create your own stitches by drawing your ideas right on the touch screen. At the touch of a finger, your design is then turned into a stitch pattern. Or modify existing stitches according to your own ideas! When embroidering, the Shape Designer allows you to multiply embroidery designs with one click and arrange them in the desired shape, e.g. as a rectangle, circle, heart, star, bow or more. And you can easily change and preview the colours of your embroidery design using the Colour Wheel!

### WiFi & BERNINA STITCHOUT APP (B 790 PRO)

WiFi allows you to transfer embroidery designs from your BERNINA Embroidery Software 9 (optional) directly to your B 790 PRO, or the other way around. Thanks to the new BERNINA Stitchout App, the embroidery process can be monitored on your smartphone. The B 790 PRO connects with the app allowing you to monitor the status of your embroidery stitchout from any room in your house.

### INVISIBLE/SMART SECURING & CUTTING OF JUMP STITCHES

The Invisible Secure function enables tie-on/off stitches to be created in the stitch direction, thereby ensuring excellent embroidery results. The Smart Secure function adds tie-on/off stitches to a design if necessary. Cutting of jump stitches can be set. No more manual trimming on the top side needed.

### BERNINA ADAPTIVE THREAD TENSION

This innovation from BERNINA ensures the ideal thread tension as you sew, helping you to achieve outstanding stitch quality on both sides of the fabric. After you set the thread tension for the thread and fabric, the BERNINA Adaptive Thread Tension continuously checks it as you sew, adjusting it unobtrusively and automatically whenever necessary.

# B 790 PRO

The next level of sewing, quilting and embroidery.

**Slide speed control**  
Sewing and embroidery speeds up to 1,000 stitches per minute

**BERNINA Dual Feed**

**Advanced embroidery module L with SDT and extra-large embroidery area (400 mm x 210mm, 15.7" x 8.3")**



BERNINA 770 QE PLUS



BERNINA 735



Includes **Stitch Designer** and **BERNINA Stitch Regulator**

**Colour 7-inch display** with easy navigation and the latest touch screen technology

**NEW: WiFi**

**Multi-function knobs**

**30 bright LED lights**

**NEW: Customisable Quilt Designs**

**Extended freearm**  
10 inches (254mm) of space to the right of the needle

**NEW: 4-Point Placement with Morphing**

**BERNINA Free Hand System (FHS)**

**NEW: Automatic Needle Threader**

**NEW: BERNINA Pinpoint Laser**

Scan QR code to watch our B 790 PRO video



BERNINA 700

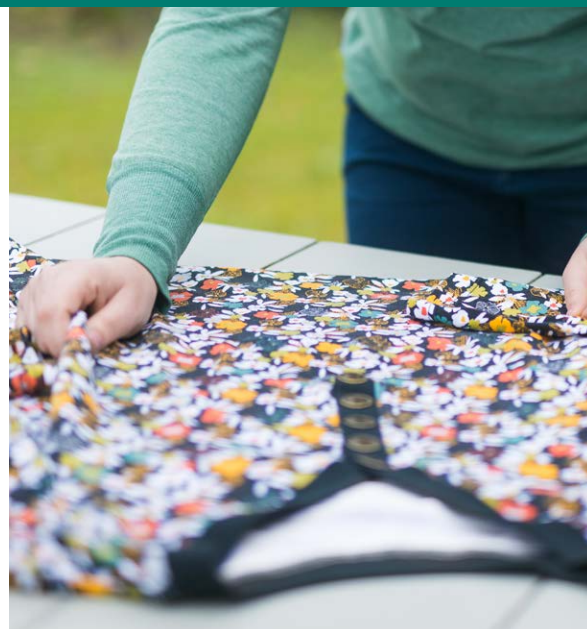
# BERNINA 5 Series

## The clever sewing experts

We developed the BERNINA 5 Series for ambitious modern creatives. These machines are the perfect size and offer lots of advantages. All the models can be conveniently operated via the large colour touch screen. The smart models in this series make sewing, embroidery and quilting even easier thanks to their practical functions. The all-rounder of the 5 Series is the B 590, as this sewing and embroidery machine comes with the new high-end Embroidery Module M with Smart Drive Technology (SDT). If you only want to embroider, the B 500, a dedicated embroidery machine with no sewing function, is the perfect choice.

## You'll love these features:

- 1 Total Stitch Control
- 2 Jumbo Bobbin
- 3 Easy, beautiful embroidery
- 4 BERNINA Adaptive Thread Tension
- 5 Large choice of stitches and stitch patterns
- 6 Easy to use
- 7 Greater sewing ease and creativity
- 8 Room for your growing needs



#A  
BIG  
DAY

“When I sew, I’m in my own world.”

**CELLA**, SEWING ENTHUSIAST FROM THE NETHERLANDS

For Cella, it’s the little things that make a Big Day: such as the smile of her daughter, when she receives the riding bag made out of vegan leather. Sewing such challenging materials is easy with her BERNINA 540.

Scan QR code to watch the video.







“The B 570 QE makes me feel like a pro.”

**SUZY WILLIAMS**, QUILT DESIGNER AKA  
“SUZY QUILTS”

If quilts tell stories, then Suzy's tell of how modern design met beautiful stitches and lived happily ever after! And the matchmaker in this tale is none other than the B 570 QE. It's made especially for quilters who want perfect stitches. That's why Suzy loves it and you will too!

### TOTAL STITCH CONTROL

The models in the 5 Series give you complete freedom. All the stitch properties, such as stitch width, stitch length and the 11 needle positions, can be individually set and temporarily saved. The needle position when you stop sewing can also be individually set to up or down. If a thread breaks, the Upper and Lower Thread Sensor on the B 590, B 570 QE and B 500 indicate this automatically. The intuitive operation is carried out by the touch of a finger on the large colour touch screen. The BERNINA Stitch Regulator (BSR) can be used on all models (except the B 500). The BSR foot assists you with free-motion sewing and quilting with a straight or zigzag stitch, ensuring stitches of the exact same length even at variable sewing speeds.

### JUMBO BOBBIN

The Jumbo Bobbin is exactly as its name suggests: it holds up to 70% more thread than standard bobbins, resulting in significantly fewer sewing interruptions. The bobbin is inserted or changed from the front so that the sewing project does not have to be removed.

### EASY, BEAUTIFUL EMBROIDERY

The automatic Invisible Secure ensures fantastic embroidery results and Smart Secure adds securing stitches to a design if they are not already preprogrammed. Cutting jump stitches manually is also a thing of the past as this happens automatically. The Thread-Up Command lowers and raises the needle when you start embroidering and brings the bobbin thread to the top of the fabric. The practical Thread Away Mode pulls threads to the underside after they have been cut automatically with a quick movement of the embroidery hoop. This leaves the surface free of thread ends (B 590, B 570 QE and B 500 only).

### BERNINA ADAPTIVE THREAD TENSION

This innovation from BERNINA ensures the ideal thread tension as you sew, helping you to achieve outstanding stitch quality on both sides of the fabric. After you set the thread tension for the thread and fabric, the BERNINA Adaptive Thread Tension continuously checks it as you sew, adjusting it unobtrusively and automatically whenever necessary. The result: the finest sewing and embroidery quality, with no need to even press a button!

### LARGE SELECTION OF STITCHES AND STITCH PATTERNS

There are hundreds of decorative stitches as well as various sewing alphabets available to you. With the Triple Stitch function on the B 590 and B 570 QE, you can give your creations the wow factor, and with the automatic buttonhole function, every buttonhole is professional. There are also lots of preloaded embroidery designs to choose from and you can upload your own embroidery designs via the USB port and edit them on the touch screen. You can rotate, mirror, resize or change the colour – whatever you want.

### EASY TO USE

With its user-friendly software and touch screen, the 5 Series is very easy to use. All the models allow designs to be edited on the screen during the embroidery process. You can rotate, mirror, combine and rearrange with a simple touch of the screen. The Undo & Redo, Group & Ungroup and 2-Point Placement functions make editing and precise positioning of embroidery designs a breeze.

### GREATER SEWING EASE AND CREATIVITY

The BERNINA Free Hand System (FHS) lets you lower/raise the presser foot and feed dog simultaneously with a knee lifter, leaving both your hands free to guide the fabric. The slide-on table clicks easily into place providing space to spread out larger projects, and greater comfort and convenience when sewing.

### ROOM FOR YOUR GROWING NEEDS

A wide range of accessories and presser feet are included as standard. As your requirements increase, the models in the 5 Series can be upgraded with additional accessories for sewing, embroidery and quilting. A practical accessory box in a modern design that can be attached to the machine easily with a magnet is also included.

# B 590

EXPERIENCE  
MORE AT  
[BERNINA.COM/  
5SERIES](http://BERNINA.COM/5SERIES)

**Advanced Embroidery Module M  
with Smart Drive Technology (SDT)**  
embroider more precisely and quietly,  
with a large embroidery area of  
15.7" x 5.9" (400 x 150 mm)



Automatic thread cutter

16 bright LED lights



BERNINA 570 QE



BERNINA 540\*/535\*

\* Not all models are available in all countries.



BERNINA 500

# BERNINA 4 Series

## MADE FOR MAKERS

More power, speed, perfection and comfort! Making your sewing and crafting life easier and more enjoyable is what the 4 Series is all about. Innovative features free you to be the sewist, crafter, quilter, maker you have always wanted to be.

For those who create.  
The 4 Series offers features,  
that you never want to be without:

- 1 Impeccable stitches with the BERNINA Hook
- 2 Powerful DC motor for thick materials
- 3 Fewer interruptions with the Jumbo Bobbin
- 4 Front-loading bobbin for easy access
- 5 Convenient automatic thread cutter (B 475 QE, B 480 & B 485)
- 6 7" (177.7 mm) right of the needle
- 7 Easy-to-navigate 4.3" colour touch screen
- 8 Adjustable presser foot pressure
- 9 Large selection of sewing stitches and alphabets
- 10 BERNINA Stitch Regulator functionality (optional for B 475 QE, B 480 & B 485)
- 11 Creative Sewing Consultant for on the spot advice



## YOUR CREATIVITY. YOUR DECISIONS

Want to go where your creativity takes you? The 4 Series models let you make all the creative decisions. Like choosing the stitch length and width or deciding the needle position. If you want the needle down when it stops, you can. And all that control is conveniently located at your fingertips on the large, intuitive touch screen.

## FRONT-LOAD JUMBO BOBBIN FOR MORE SEW TIME

Fewer stops and starts is the result of a bigger bobbin that holds up to 70% more thread than standard bobbins. And since it is conveniently changed from the front, there's no need to remove your project.

## STITCHES PLUS LETTERS PLUS MORE OF WHAT YOU LOVE

There's a huge choice of sewing and decorative stitches as well as alphabets. The 4 Series machines offer over 150 to 250 decorative stitches and up to 5 alphabets. And the B 475 QE is full of special quilting stitches. The choices are many and every one of them yours.

## EXCLUSIVE BERNINA ADAPTIVE THREAD TENSION

Achieve permanent control of the thread tension. Once it's adapted to the thread and fabric, the thread tension adjusts automatically while sewing. And the innovative BERNINA Hook keeps every stitch consistent and precise.

## BERNINA HOOK INSIDE

The BERNINA Hook is the centrepiece of the BERNINA 4 Series. It's fast while also being quiet. It's efficient while housing a Jumbo Bobbin. It's front-loading for convenient, fast changes and easy cleaning and oiling.

## BERNINA FREE HAND SYSTEM (FHS)

The BERNINA Free Hand System lets you lift or lower the presser foot and lower the feed dog at the same time, using only the knee lifter so keeping your hands free to guide your projects. The knee lifter is standard on the B 485, B 480 and B 475 QE and optional on the B 435.

## SIMPLE ON-SCREEN EDITING

Be as creative as you dare with your stitches by editing directly from the easy-to-navigate touch screen while you work. Simply tap the screen to choose your favourite stitches. Or maybe you want to combine different stitches. Or create a new look by extending your decorative stitches using Pattern Elongation (available on B 485 & B 480). Or create a custom pattern with Pattern Repeat.

## SPECIAL QUILTING STITCHES

With 40 quilting stitches plus 29 utility stitches and 4 sewing alphabets pre-loaded and ready to go, the B 475 QE is well equipped for all your quilting and creative needs.

## BERNINA STITCH REGULATOR – BSR (OPTIONAL)

The amazing BSR regulates impeccable equal-length straight and zigzag stitches at variable sewing speeds during free-motion quilting. BSR is optional for models B 475 QE, B 480 and B 485 and is not available on the B 435.



“The day an idea became reality.”

**SIMONE**, SEWING ENTHUSIAST  
FROM SWITZERLAND

Simone gushes about many Big Days: When she finds a new fabric, gets inspired by others or when she creates a perfect fitting blouse on the first try.

Scan QR code to  
watch the video.



# B 480

**Automatic thread cutter  
(B 485 / B 480 / B 475 QE)**  
Saves time: it cuts the thread  
and raises the needle in one step

**Variable sewing speed**  
Maximum speed of 900 stitches  
per minute

**Adjustable presser foot pressure**  
Adjusts for thick or thin fabric to  
eliminate skipped stitches

**Easy threading**  
The semi-automatic needle  
threader makes threading  
super easy

**BERNINA Hook**  
Front-loading Jumbo Bobbin holds  
up to 70% more thread



BERNINA 480\*/485\*



BERNINA 475 QE

\* Not all models are available in all countries.

**Modern, colour touch screen**  
Easy to use with simple navigation



**Multi-function knobs**  
Stepless rotation, easy to operate

7" (177.7 mm) to the right of the needle

Easy access at the front

**BERNINA Stitch Regulator (BSR) enabled**  
(B 485 / B 480 / B 475 QE)  
Works with straight or zigzag stitch and with feed dog lowered. BSR foot is optional.

**BERNINA Free Hand System (FHS)**  
including knee lifter  
(optional with the B 435)



BERNINA 435

# BERNINA 3 Series

## The stylish entry-level machines

Robust quality, user-friendly and easy handling, coupled with an elegant design. Stylish sewing really is that easy!

### QUALITY FROM TOP TO BOBBIN

Our 3 Series machines are full of the latest technology. Their robust, durable quality ensures nothing stands in the way of your creativity. On the outside, the simple, user-friendly operation makes your maker life easy. A bright modern LCD screen provides an overview of the function settings at all times and the direct selection buttons allow quick access to all the functions.

### BRING YOUR CREATIVITY TO LIFE

Whether you want to sew your own clothes, make unique accessories or just repair something, the B 335 and B 325 are always at your side. You can sew all kinds of fabrics and expertly finish or embellish your projects with decorative stitches. However you express your creativity, your BERNINA will bring it to life.

### EASE OF USE COMES STANDARD

The most frequently used functions are easily accessible right in front of you, for example the start/stop button for sewing without the foot control or the reverse sewing button. The position of the needle when you stop sewing is set using the needle stop up/down button – incredibly helpful when sewing corners. The pattern end and mirror image (B 335 only) features, useful when sewing decorative stitches, are also located here. And with the slide speed control, set the speed you want, up to 900 stitches per minute.

### GOOD THINGS COME IN SMALL PACKAGES

16 cm (6.3 inches) to the right of the needle is plenty of room for your ideas, but takes up hardly any space in your sewing room. And the freearm makes manipulating closed items, such as sleeves or trouser legs, particularly easy and convenient.



“I know I have a new best friend with the B 335.”

**ANNIKA VICTORIA,**  
DIY LOVER AND YOUTUBER

Annika is young, talented, creative and crazy unique. The YouTuber from Sydney, Australia, knows exactly what her sewing fans want: uncomplicated patterns that are fun to sew. And, as her down-to-earth, you-can-do-it videos show, her BERNINA 335 is the go-to partner she can count on. She loves her BERNINA 3 Series. You will too!



### BERNINA FREE HAND SYSTEM (FHS)

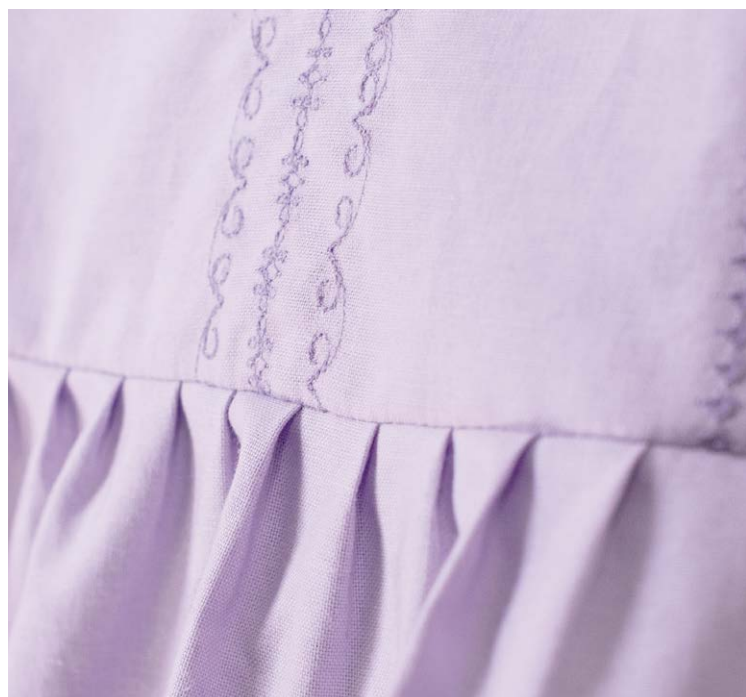
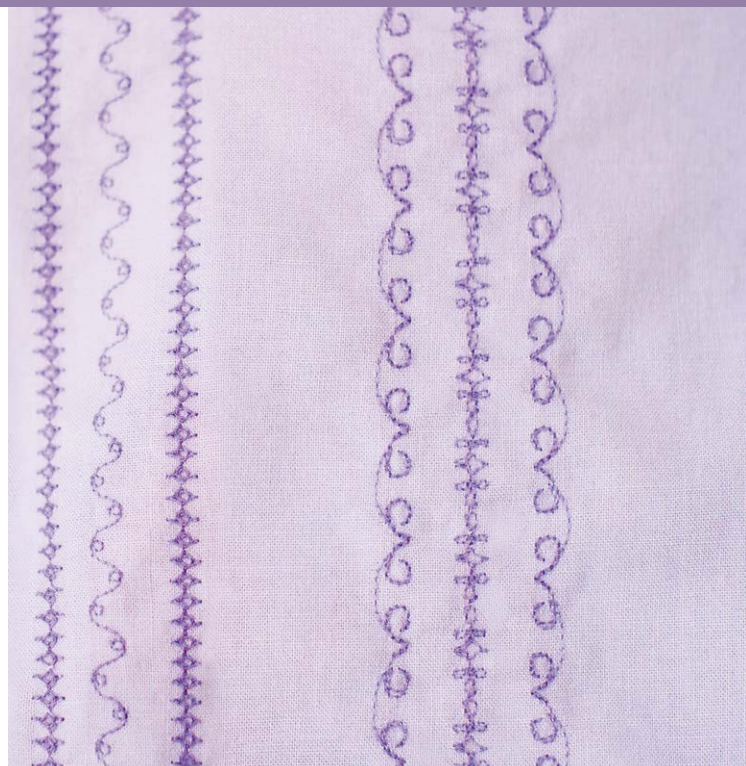
Raise or lower the presser foot while simultaneously lowering the feed dog – without having to take your hands off the fabric thanks to the BERNINA Free Hand System. The knee lifter makes it possible! The FHS capability with the knee lifter is optional on the B 335. The FHS is not available on the B 325.

### NICE AND CONVENIENT

The semi-automatic threader makes threading the needle simple and the bright LED sewing light lets you sew through the night. Direct selection buttons let you quickly and easily select the perfect stitch, which can conveniently be adjusted using the stitch width and length altering buttons. Individual stitch settings can then be saved in the memory, losing nothing. And usefully, you can monitor everything on the screen.

### ALL-ROUND EXCELLENCE

With stitched lettering (sewing alphabet) and a large selection of decorative stitches, make your sewing projects as unique as you are. Save time with functions like the button sew-on program. Or find the space you need on the popular freearm extension table, which gives you more room around the presser foot and needle. The accessory package includes various presser foot soles; and the Buttonhole Foot with Slide #3A is included in the B 335 to sew automatic buttonholes. The 3 Series is easily upgraded with a wide range of optional accessories.



BERNINA 335



BERNINA 325

# B 335

**Variable sewing speed**  
Up to 900 stitches per minute

**LCD screen**  
Overview of all the settings



**Semi-automatic needle threader**  
Practical built-in threading guide

**6.3" (160 mm) to the right of the needle**



**Convenient stitch adjustment**

Stitch width, needle position and stitch length are easy to set with a button



**Ergonomic**

Easy-to-reach buttons:  
Start/stop and reverse sewing

**Memory**

Stitch settings are easy to save in the memory

**Direct selection buttons**

Quick, direct selection of different stitches

**Built-in BERNINA Free Hand System (FHS)**

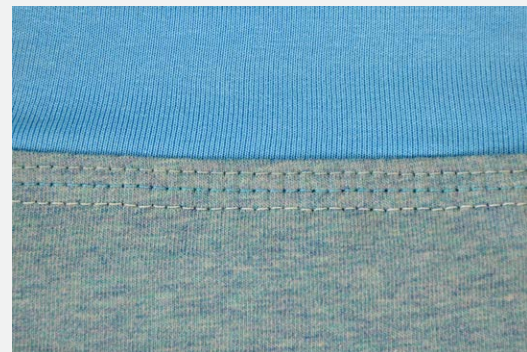
Simultaneous raising of the presser foot and lowering of the feed dog with the knee lifter (B 335 optional)

# BERNINA Overlocker

## Sew like a pro with a BERNINA Overlocker

Overlockers make an ideal addition to your sewing machine! Their absolute speciality is finishing edges of all kinds. They create professional, robust seams and hems in high-stretch materials. Rolled hems and decorative flatlock seams are a breeze, and functions such as differential feed and Micro Thread Control (mtc) enable you to sew immaculate stitches with any combination of thread and fabric. It is also possible to create gathering and ruffles, and there are endless design possibilities using decorative threads.

Do you want to trim and neaten the edge of the fabric while creating professional seams and hems, all in one process? What sounds too good to be true becomes a reality with an overlocker. Whatever you sew, you'll complete your projects quicker than ever before and what's more, your sewing will look more professional – inside and out.



## There are lots of reasons to get an Overlocker:

- Professional neatening of fabric edges
- Superb results quickly and easily
- Ideal for knitted, stretch and woven fabrics
- Perfect for delicate silk or satin fabrics
- Can also sew heavy linen, fleece and denim fabrics
- Differential feed for pucker-free seams or for gathering and ruffles

Unlike a sewing machine, an overlocker can sew with up to four or five threads simultaneously. The threads are intertwined to create the highly elastic seams needed for knitted fabrics, jersey and all kinds of stretch fabrics.

By choosing an overlock/coverstitch combo machine, you have all the stitches combined on one machine. A combo machine has three functions: it can sew overlock stitches, coverstitches and combo stitches! A dedicated overlocker does not include either coverstitches/chainstitches or combo stitches. But with these two types of stitches, you can make your garments look even more professional!

Coverstitch is a flat hem that overcasts the fabric edge while also remaining elastic and flat. 3- or 4-thread coverstitch hems are well-known as classic T-shirt hems. However, coverstitch can also be used as a flat joining seam if the seam is in direct contact with the skin and should not rub against the skin – such as in swimwear, underwear and sportswear.

Chainstitch can be used to join fabrics and the seam allowance is ironed open. It is suitable as a hem and for topstitching due to the attractive chainstitch formation. Combo stitches secure fabrics with chainstitch while the fabric edges are simultaneously overcast with a 3- or 2-thread overlock stitch. This results in wide, robust seams such as those used in the home textiles sector.



BERNINA L 890



BERNINA L 860



BERNINA L 850

# BERNINA L 8 Series

Designed and developed by  
BERNINA in Switzerland



## ONE-STEP BERNINA AIR THREADER

The exclusive One-step BERNINA Air Threader makes threading the loopers incredibly easy. The threads are magically moved through the machine via one simple step on the foot control. So both hands remain free. The machine automatically sets the loopers in the correct position for the air threader – no turning the handwheel or searching for the right position. Simply press the foot control and you're off.

## GRAND SEWING SPACE

The space offered on the L 8 Series machines is generous by any definition. You get more room to the right of the needles and more workspace height than ever before on a BERNINA overlocker. The practical freearm is an advantage when sewing closed textiles, because you can easily slide sleeves or cuffs over it.

## CONVENIENT AND EASY TO USE

The L 8 Series overlockers offer a range of convenient features to help you sew to the highest standard: pressing the foot control with your heel raises or lowers the needle by a half stitch, making handling easier. The BERNINA Free Hand System (FHS) lets you raise and lower the presser foot with your knee – great for sewing corners. And the presser foot can be swung out to the side for easier access to the needles.

“The ultimate overlocker.”

**ANDREA MÜLLER**, TEXTILE DESIGNER  
AKA "JOLIJOU"

As the designer of the brand “Jolijou”, Andrea Müller creates colourful jersey fabrics and loves bringing them to life in new projects using the BERNINA L 850 overlocker. In particular, the One-step BERNINA Air Threader and the fast sewing speed with outstanding stitch quality win this mother of three’s admiration when projects have to be done on a limited schedule.



# L 890

## The revolutionary overlock/coverstitch combo

As a combo machine, the L 890 has three different functions: overlock stitches, coverstitches and 4-thread and 5-thread combination stitches. It creates professional seams, finished edges and rolled hems and combines all the functions of an overlocker and a coverstitch/chainstitch machine in one model.

### INTUITIVE OPERATION VIA TOUCH SCREEN

The L 890 is easily operated using the centrally located Colour Touch Screen. Stitch selection, individual stitch settings, stitch properties or memory – the touch screen has all of the information available at your fingertips anytime you need it and allows you to make changes while sewing. A Creative Sewing Consultant, Stitch Optimiser and helpful animations for all functions are available to you. Stitch selection can be performed in two modes: Advanced users can use Expert Mode to apply all their desired settings directly, quickly and individually, while Guided Mode provides step-by-step support.

### TOTAL STITCH CONTROL

The stitch length, thread tension and differential feed can be adjusted while sewing and the amount of the overedge thread can be precisely adjusted at any time thanks to the Micro Thread Control (mtc).

### QUICK THREADING

Colour-coded One-path Threading enables you to switch from an overlock stitch to a coverstitch or to a combination stitch in no time at all.



“I finally have everything I’ve  
ever wanted.”

**JEN BEEMAN, PATTERN DESIGNER**

Jen Beeman loves designing fashions in fine jersey fabrics. Her machine of choice for trouble-free, smooth-looking stitches on woven and knit fabrics is the L 890. The outstanding stitch quality gives her garments the professional look she expects. She especially loves the convenient One-step BERNINA Air Threader, for fast, easy threading of the looper threads. As a combo machine, the L 890 offers the right stitch for every idea. The touch screen allows Jen to keep an eye on everything, while focusing on her creativity.



# L 860 & L 850

## Two unique overlockers

The BERNINA L 860 and L 850 are classic overlockers. They are suitable for all thread and fabric combinations, particularly high-stretch and knitted fabrics. They sew using up to 4 threads and offer the perfect seam for every sewing project.

The L 860, like the L 890, is operated via the centrally located colour touch screen, while the L 850 is simple to operate without a touch screen.

### EXTREMELY FAST, PRECISE & QUIET

The L 860 and L 850 reach a maximum sewing speed of 1,500 stitches per minute (spm). The foot control allows you to control the motor, providing strong, consistent stitching power as well as precision at any sewing speed. Not only can you sew quickly, but you can set the sewing speed as slow as 250 spm. Using the BERNINA Foot Control gives you the ability to sew stitch-by-stitch, making precise lines and flawless curves a simple process. And all of this is achieved with the extremely quiet hum of a BERNINA.

### QUICK THREADING

Threading the needles is simple thanks to the integrated needle threader and the automatic needle stop up function.

### TOTAL STITCH CONTROL

On the L 860, the settings can also be changed individually and 100 stitches can be saved in the Personal Program. The L 850 offers various individual settings. Achieve perfect results with just a few adjustments in no time. You can get started right away with the recommended default settings or you can use the numerous options to personalise the stitch settings for endless creativity.



“The technology of the L 860 makes you feel like there’s a teacher inside the machine.”

**JULIAN COLLINS**, DESIGNER AKA “JULIAN CREATES”

Julian Collins is fascinated by the L 860 – and for good reason. Because the L 860 is the perfect overlocker for beginners and professionals alike. From easy looper threading with the One-step BERNINA Air Threader, to navigation on the large touch screen for an easy stitch selection, to the built-in needle threader and swing-out presser foot, the L 860 simplifies his entire sewing process. Like Julian, you’ll appreciate the Expert and Guided Modes to help you create your perfect stitch.



# L 890

**Colour touch screen with Guided Mode and Expert Mode**

**All settings on the screen:**

- Stitch selection with automatic thread tension, stitch length, and differential feed
- Access to your Personal Memory, Creative Sewing Consultant, tutorial, animations, settings assistance
- Programmable needle stop up/down

**6-step presser foot pressure**

**LED sewing light**

**Slide-on extension table**

**Freearm**

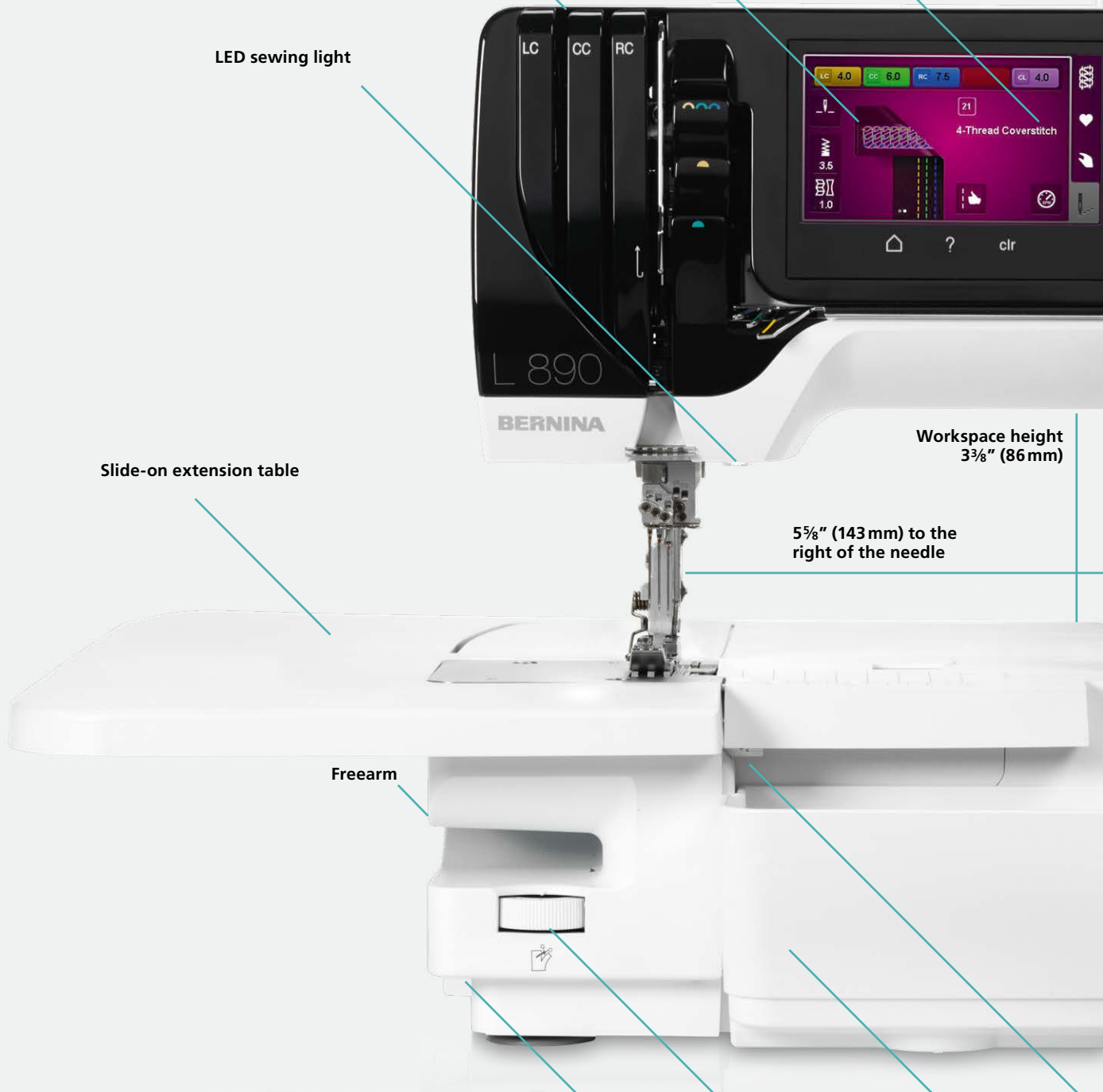
**Knife on/off**

**Adjustment of knife position and stitch width**

**Cut-offs bin**

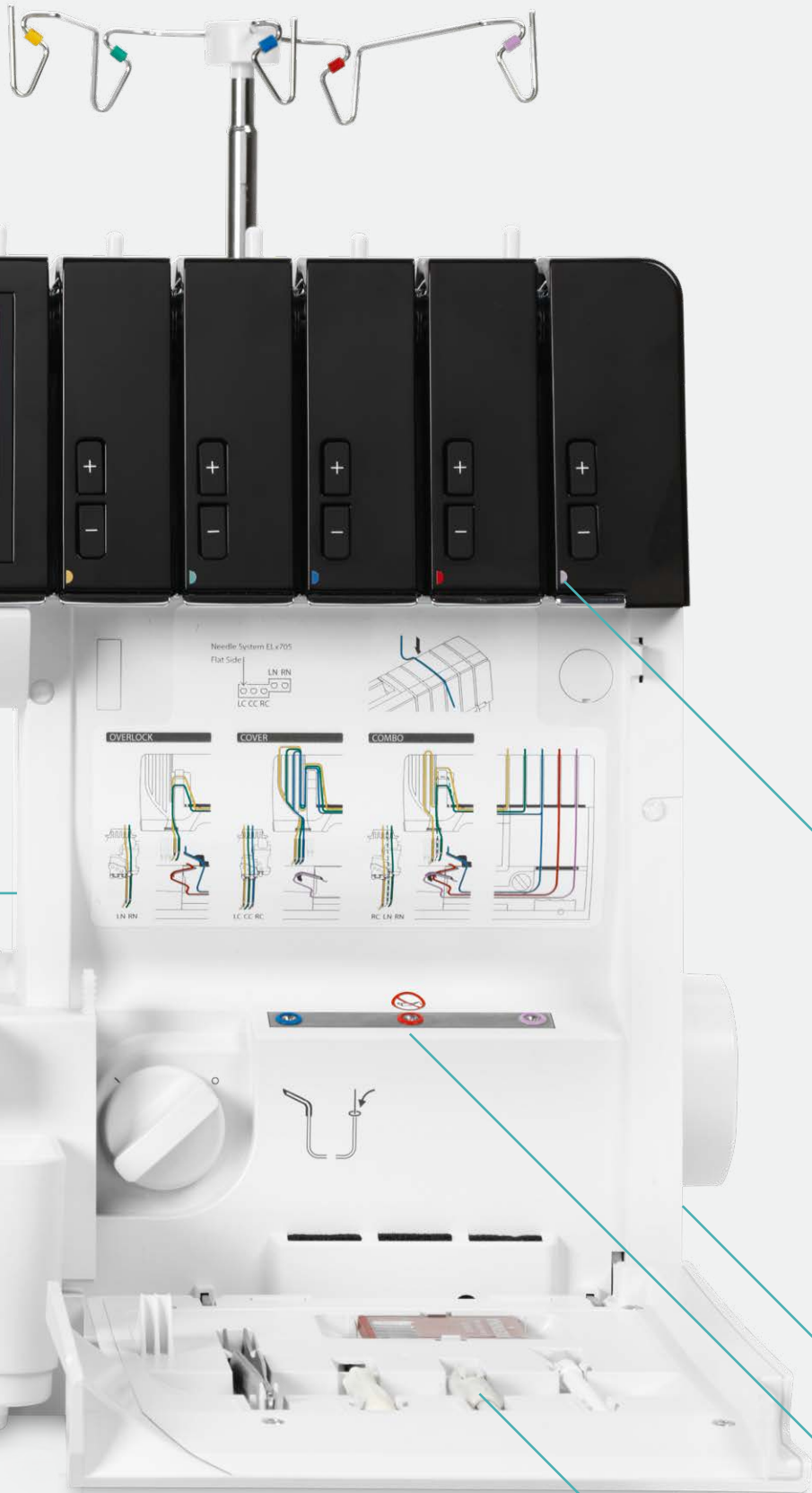
**Workspace height  
3<sup>3</sup>/<sub>8</sub>" (86 mm)**

**5<sup>5</sup>/<sub>8</sub>" (143 mm) to the  
right of the needle**





EXPERIENCE  
MORE AT  
[BERNINA.COM/L890](http://BERNINA.COM/L890)



Colour-coded One-path Threading

BERNINA Free Hand System (FHS)  
– Knee lifter

One-step BERNINA Air Threader

Micro Thread Control (mtc)

Accessories in the threader cover

# BERNINA L 4 Series

Produce seams and hems of excellent stitch quality

Working with the L 4 Series overlockers means saving time and stitching fast. Sewing projects take shape quickly and with little effort. Innovative features make BERNINA overlockers delightfully easy to use, ensuring professional quality down to the very last stitch.

## EASE OF USE

Settings are adjustable while sewing, including the thread tensions, the cutting width and the stitch length. Effortlessly change the differential feed to ensure wave-free seams in knits and no puckering in fine fabrics. A manual needle threader allows for easy and ergonomic threading. The colour-coded threading paths as well as the lower looper threader support your quick threading.

## ULTIMATE CONVENIENCE

The well-lit, large workspace eases sewing as well as threading of loopers and needles. The L 460 also includes the BERNINA Free Hand System (FHS) that lowers and temporarily raises the presser foot, allowing both hands to be free for sewing and placing the fabric. The slide-on table expands the work space to support larger sewing projects (standard with the L 460, option available for the L 450).

## MICRO THREAD CONTROL (MTC)

Micro Thread Control (mtc) makes over-the-edge thread loops disappear with a quick flip of a lever. This saves time and effort while ensuring consistent high-quality stitches, professional seams and finished edges.

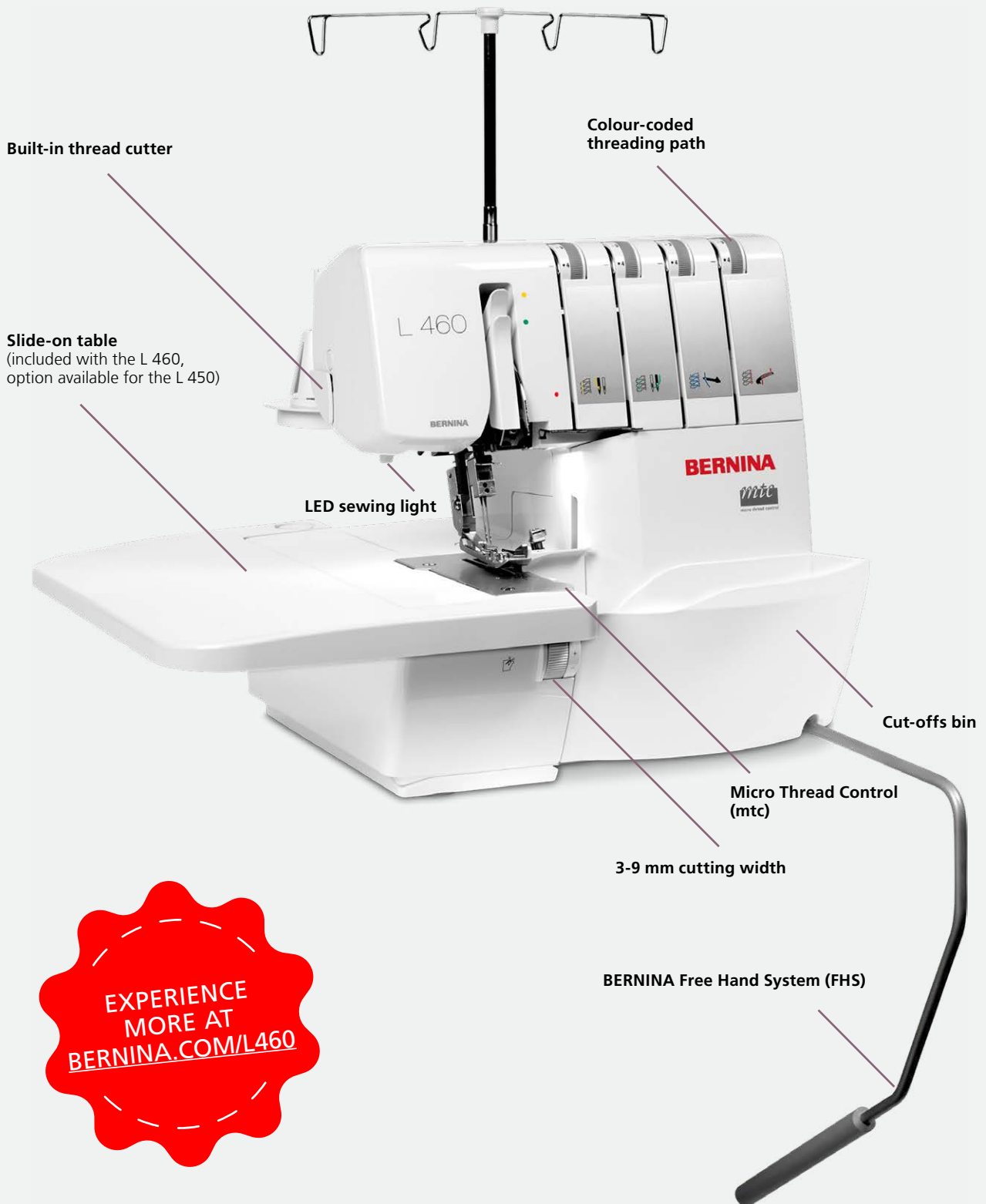


BERNINA L 460



BERNINA L 450

# L 460



# Q 24 / Q 20

Professional and modern: Longarm Quilting



“The day I wrap it up.”

**HEATHER**, QUILTER FROM THE USA

Heather's Big Day is the moment she gifts her work. It makes her the happiest when she sees someone wrapping themselves with the quilt she created.

Scan QR code to  
watch the video.



**#A  
BIG  
DAY**

## QUILT BIG

Carry out your large quilting projects with confidence and immerse yourself in the world of longarm quilting. Due to the simplicity of the machine and frame design this quilting system has the largest usable quilting space in its category. Select from a 20" or 24" platform to build the perfect system for home or studio.

The BERNINA Q20 comes standard as a sit-down model machine with a robust quilt table. The BERNINA Q24 is designed as a frame model machine and can only be used on the PRO Frames. The large freearm on both models offers a great deal of length and height, thus helping with big quilts.

Choose between\*:

- 20" sit-down model with quilt table
- 24" or 20" model with "Large" PRO Frame (12'11" / 3,93 m)
- 24" or 20" model with "Classic" PRO Frame (11'11" / 3,63 m)
- 24" or 20" model with "Small" PRO Frame (8'10" / 2,7 m)

## Q-MATIC: QUILTING WITH SOFTWARE

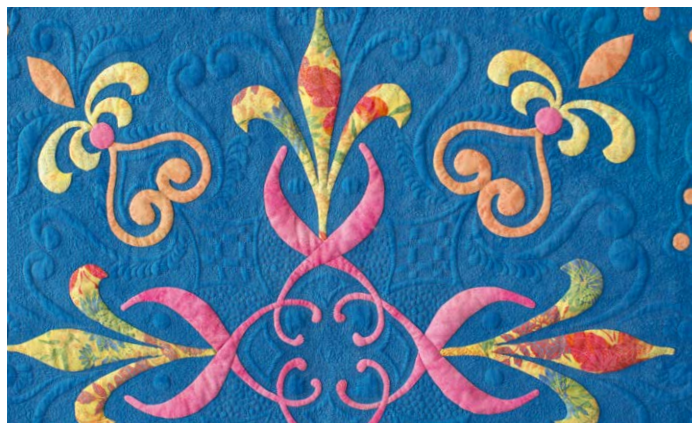
Teaming up with the innovative BERNINA Q24 and Q20 machines on Classic or Large PRO Frames, Q-matic fulfills your automated quilting needs in just a few simple steps. Whether stitching out simple edge-to-edge designs or intricate custom patterns, your way to an original masterpiece will be extremely easy.

The intuitive Q-matic Software interface helps you finish your quilt with ease. The 21.5" all-in-one touch screen PC mounted to the side of the frame guarantees convenient access to all designing and quilting features. For ease-of-use, additional interactive displays on the machine head screen allow control of design stitch-out and placement directly from the sewhead. Returning to the main screen is not necessary, making your quilting highly efficient.

**The Q-matic Kit is only available in selected markets.**



\*Not all products and models are available in all countries.



# Q16 PLUS / Q16

Two longarm machines for any size space

Manoeuvring a large quilt through the limited space of a household sewing machine can be a difficult task. But now we have the perfect solution for you! Introducing the BERNINA Q 16 and Q 16 PLUS – the longarm machines for quilters with big quilting dreams and limited space at home.

Both models have a throat space of 16.5", providing a larger work space than a sewing machine. In combination with a quilting table or a 5 ft or 10 ft modular BERNINA Studio Frame (Q 16 PLUS only), the BERNINA Q 16 and Q 16 PLUS fulfil all quilting expectations. The Q 16 PLUS on the 10 ft Studio Frame can also be upgraded with the Pantograph Kit and can be automated with Q-matic (both optional).



“The perfect match for longarm lovers like me.”

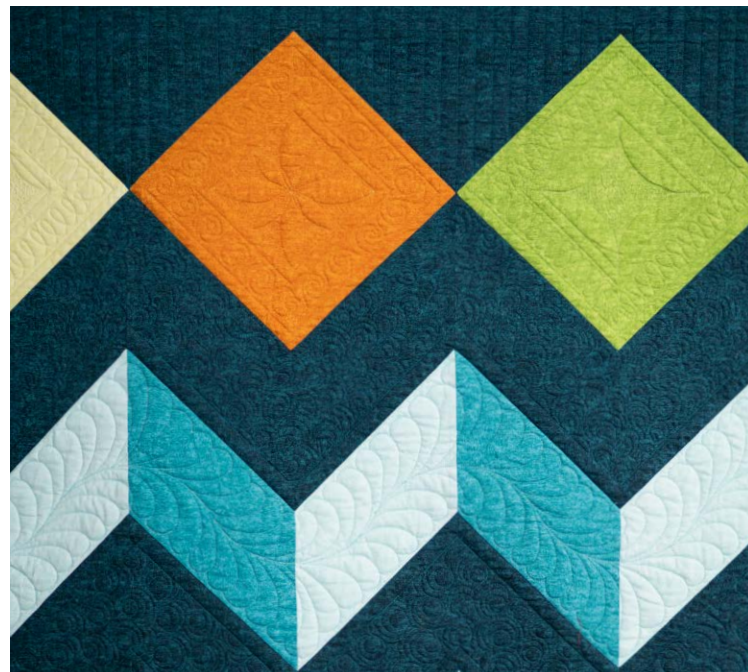
**AMANDA MURPHY, QUILT AND PATTERN DESIGNER**

Amanda Murphy has a passion for designing and creating quilts on her BERNINA Q 16 PLUS. While her studio is small, the roomy quilting space of the Q 16 PLUS genuinely enhances her creative process. Like Amanda, you'll appreciate the fast 2,200 stitches per minute as well as the three modes of the BERNINA Stitch Regulator.

- BERNINA quality at a great value
- Spacious 16" workspace
- Built-in BERNINA Stitch Regulator for impeccable stitches
- 5 ft or 10 ft modular studio frame
- Table or quilt frame options available



Not all products and models are available in all countries.



# BERNINA Embroidery Software 9

## DesignerPlus and Creator with WiFi functionality

BERNINA Embroidery Software 9 is the newly developed software with both the long time embroiderer and the BERNINA Software novice in mind. It opens the door to outstanding and creative embroidery and is available in two levels: **DesignerPlus** offers all the great new and incredible embroidery features for creatives, who want to design unique motifs.

Embroiderers who own previous versions can update their older BERNINA Embroidery Software to BERNINA Embroidery Software 9 to get all the great new features.

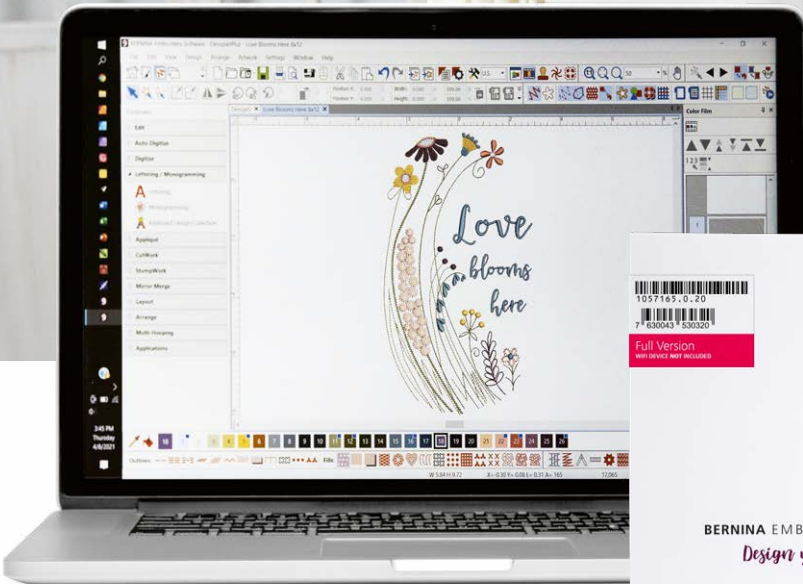
**Creator**, the second level, is the entry to embroidery, giving the upcoming embroiderer all the tools needed. You can use Creator to start your embroidery projects as well as edit and alter designs to create something personal and valuable to you. And if you're ready for it, you can easily upgrade from Creator to DesignerPlus any time.

BERNINA Embroidery Software 9 offers numerous new features designed to make creating embroidery fast, easy and rewarding. Both levels offer a variety of new options and possibilities, including WiFi functionality. This new feature requires the BERNINA WiFi Device, which is available as an optional extra. With the B 790 PRO, you can even send embroidery designs directly from the BERNINA Embroidery Software 9 to the machine via WiFi or the other way around. Creating new designs has never been so easy. Embroidery has reached a new level!

Download the free trial version of  
BERNINA Embroidery Software 9  
for 30 days at [bernina.com/V9](http://bernina.com/V9)







“Finally I can create my most memorable designs.”

**SUE O'VERY**, EMBROIDERY AND GARMENT DESIGNER  
AKA "SOOKIE SEWS"

Sue O'Very is not only a very creative person but also a real sewing and embroidery enthusiast from Florida, USA. As a costume and fashion designer she traveled the globe before she started running her own business in 2010 under the label "Sookie Sews". Sue has been digitising for over 25 years, designing creative embroidery embellishments. Now with the BERNINA Embroidery Software 9, she has found the software that matches her imagination.

# New features you'll just love



## EASY INSTALLATION

The software can be installed on your computer in no time. You can also use the software on multiple computers by simply logging in and out on the different devices.

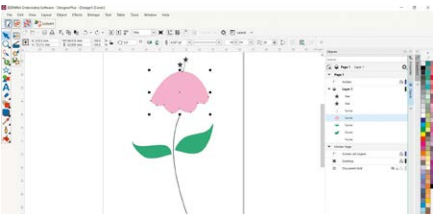
## HOME SCREEN

You are first taken to an informative and interactive home screen that provides links to helpful tutorials, embroidery designs and new projects.



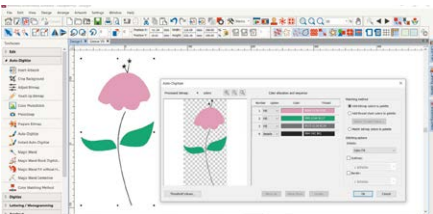
## WIFI FUNCTIONALITY

The BERNINA WiFi Connector allows embroidery designs to be transmitted wirelessly – from your computer to your embroidery machine! This new feature requires the BERNINA WiFi Device, which is available as an optional extra.



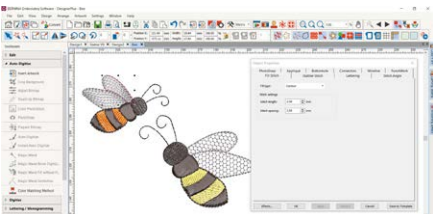
## CORELDRAW SE (DESIGNERPLUS)

If you wish to start with a new graphic, simply open the graphic program CorelDraw SE, which is included with DesignerPlus, and get your own drawings in a breeze.



## AUTO-DIGITISING AND MANUAL DIGITISING

You can convert your own artwork (a drawing, sketch or photo) into an embroidery design using the enhanced automatic or manual digitising tools. DesignerPlus also offers new features such as the Keyboard Design Collection, Quilt Design and Cross Stitch Design Application, Multi-Hooping, PunchWork and Couching.



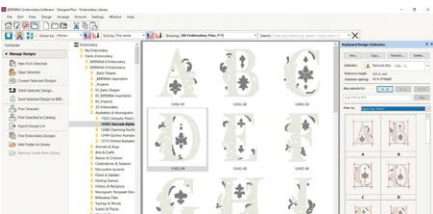
## FULL EDITING

You can add special fill effects to your design, and change colours or sizes. New features offer even more benefits! The Branching tool creates the most efficient embroidery sequence, and the Weld tool allows you to combine multiple objects into one.



## FONTS

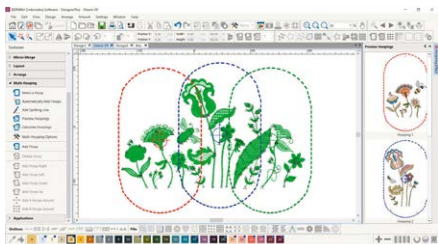
BERNINA Embroidery Software 9 contains many new fonts, with a total of over 100 styles in all – including new modern handwritten-style fonts.



## KEYBOARD DESIGN COLLECTION

The choice of fonts can be expanded even further with the Keyboard Design Collection. With this versatile new function, letters or designs can be assigned to the keyboard to create additional fonts – you can even add your own handwriting.

# Many more features to enjoy



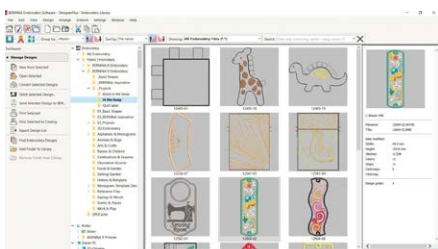
## MULTI-HOOPING

Creating large designs is simple using the Multi-Hooping feature which automatically places more than one hoop when necessary. It places hoops to cover the entire design, fitting as many objects as possible into each hoop position. You can preview all hooping sequences and save it as a complete design or as separate multi-hooping machine files.



## COLOUR MANAGEMENT

Palette positions are numbered for easy reference within the Colour Management system and the colour wheel features a range of colour options. It has never been easier to pick the right colour and fill objects with the help of the numerous choices within the palette (56 + 3 appliqué). The chosen colours are tagged with a blue marker.



## INTEGRATED DESIGN LIBRARY

This powerful search engine ensures quick access to all designs and provides enhanced design management. It makes it easy to browse, group and search for designs or get inspired. From here you can also directly send your designs to the BERNINA WiFi Device (optionally available) for stitch-out.



## 3D EMBROIDERY

The Colour Photo Stitch and Automatic Digitising features turn your favourite photo into a detailed embroidery design in just a few steps. With Puffy Lettering add outstanding 3D effects to embroidered letters and with the enhanced CutWork function create beautiful Eyelet Embroidery and Appliqué. The Globe Effect turns flat embroidery into a 3D design and with Couching, create stunning 3D effects with wool.

## AUTOMATED QUILT BLOCK LAYOUT

Embroidering on quilts is also easy with the Automated Quilt block layout feature. The automatic quilt background stitching is used to create "echo" quilting designs, like scroll-clipped or stipple-filled quilt blocks. And you get quilt block sizing and positioning aids.

## EASY POSITIONING

The positioning feature makes it easy to place designs where you want them. Just set the design worksheet and add a template to your preview, then move and rotate the design within the hoop and use the advanced print preview options. Use the hoop template and basting stitch markers for exact positioning.

## APPLIQUÉ

Enjoy the extensive tools to create appliqué and convert any shape into an appliqué design with just one click. Even creating appliqué with holes inside is now easily possible. Want to cut the fabric with the CutWork tool or a cutting machine? No problem as you can save an extra cutting file directly from the embroidery canvas.

## USER-FRIENDLY INTERFACE AND IMPROVED FEATURES

All the incredible software features are easy to use and navigate with the user-friendly interface. The menu is intuitive and easy to manage. You have the choice between small or large icons for a perfect view and the tool names and functions can be displayed if desired. It's possible to open more than one design at a time with easy switching between designs via the design tabs.

# Feature overview

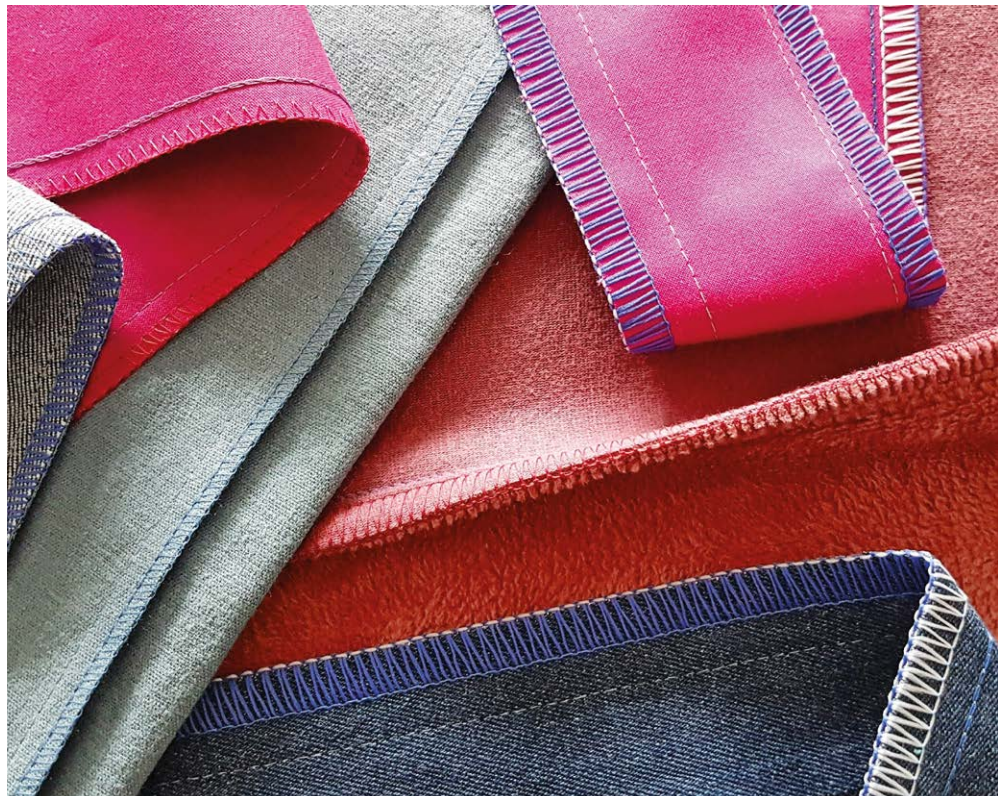
## Overlockers

Stitch Variations	L 890	L 860	L 850	L 460	L 450
Total number of stitches	27	18	18	16	16
4-thread overlock	1	1	1	1	1
3-thread overlock (wide/narrow)	2	2	2	2	2
3-thread super-stretch	1	1	1	1	1
3-thread flatlock (wide/narrow)	2	2	2	2	2
3-thread narrow seam	1	1	1	1	1
3-thread rolled hem	1	1	1	1	1
3-thread picot stitch	1	1	1	1	1
2-thread overlock (wide/narrow)	2	2	2	2	2
2-thread flatlock (wide/narrow)	2	2	2	2	2
2-thread rolled hem	1	1	1	1	1
2-thread wrapped overlock (wide/narrow)	2	2	2	2	2
2-thread blanket stitch (wide/narrow)	2	2	2	–	–
4-thread coverstitch	1	–	–	–	–
3-thread coverstitch (wide/narrow)	3	–	–	–	–
2-thread chainstitch	1	–	–	–	–
Chainstitch with 3-thread overlock (wide/narrow)	2	–	–	–	–
Chainstitch with 2-thread overlock (wide/narrow)	2	–	–	–	–

Comfort Features	L 890	L 860	L 850	L 460	L 450
One-step BERNINA Air Threader (for looper threads)	✓	✓	✓	–	–
Lower looper threader	–	–	–	✓	✓
Colour touch screen	✓	✓	–	–	–
Expert Mode and Guided Mode	✓	✓	–	–	–
Stitch selection / Settings on the screen	✓	✓	–	–	–
Personal Memory for 100 individual stitches	✓	✓	–	–	–
Helpful animations and tutorials	✓	✓	–	–	–
Creative Consultant	✓	✓	–	–	–
Stitch Optimiser	✓	✓	–	–	–
Freearm	✓	✓	✓	–	–
Sewing space to the right of the needle	5 5/8" / 143 mm	5 5/8" / 143 mm	5 5/8" / 143 mm	2" / 50 mm	2" / 50 mm
Workspace height	3 3/8" / 86 mm	3 3/8" / 86 mm	3 3/8" / 86 mm	1 1/2" / 40 mm	1 1/2" / 40 mm
Swing-out presser foot with auto swing back	✓	✓	✓	–	–
Built-in needle threader	–	✓	✓	–	–
One-path threading, colour-coded	✓	✓	✓	✓	✓
Automatic needle stop up	✓	✓	✓	✓	–
Needle stop up/down programmable	✓	✓	–	–	–
Needle up/down with BERNINA Foot Control	✓	✓	✓	✓	–
Thread tension release when presser foot raised	✓	✓	✓	✓	✓
Stitch-by-stitch sewing	✓	✓	✓	✓	–
Stitch length fine tuning for rolled hem	✓	✓	✓	✓	✓
Adjustable stitch length while sewing	✓	✓	✓	✓	✓
Adjustable differential feed while sewing	✓	✓	✓	✓	✓
Thread tension adjustable while sewing	✓	✓	✓	✓	✓
Adjustable cutting width while sewing	✓	✓	✓	✓	✓
Integrated upper looper converter	✓	✓	✓	–	–
Accessories in the threader cover	✓	✓	✓	✓	✓
LED sewing light	✓	✓	✓	✓	✓
Safety switch for open cover and raised presser foot	✓	✓	✓	✓	–

Technical Specifications	L 890	L 860	L 850	L 460	L 450
Micro Thread Control (mtc)	✓	✓	✓	✓	✓
Overlock stitch width 3-9 mm	✓	✓	✓	✓	✓
Coverstitch width 3/6 mm	✓	–	–	–	–
Combo stitches width 7–11 mm	✓	–	–	–	–
2-step presser foot lifter with front-foot-lift	✓	✓	✓	✓	✓
Adjustable presser foot pressure	6 steps	6 steps	6 steps	5 steps	5 steps
Rolled hem lever integrated under stitch plate	✓	✓	✓	✓	✓
Easy to engage and disengage the knife from outside	✓	✓	✓	–	–
Motor	DC	DC	DC	DC	AC
Maximum sewing speed (stitches per minute)	1,350	1,500	1,500	1,500	1,200
Weight of machine	29,5 lbs / 13,4 kg	28,8 lbs / 13,1 kg	27,1 lbs / 12,3 kg	21,6 lbs / 9,8 kg	18,1 lbs / 8,2 kg

Standard Accessories	L 890	L 860	L 850	L 460	L 450
Standard Overlock Foot (with Tape Guide)	-	-	-	✓	✓
Standard Overlock Foot #L10 (with Tape Guide)	-	✓	✓	-	-
Overlock/Combostitch Foot #C11	✓	-	-	-	-
Cover/Chainstitch Foot #C13	✓	-	-	-	-
BERNINA Free Hand System (FHS) with knee lifter	✓	✓	✓	✓	-
Slide-on extension table	✓	✓	✓	✓	optional
Freearm cover	✓	✓	optional	-	-
Coverstitch cover	✓	-	-	-	-
Upper looper converter	✓	✓	✓	✓	✓
Manual needle threader/inserter	✓	✓	✓	✓	✓
Thread cutter	✓	✓	✓	✓	✓
Cut-offs bin	✓	✓	✓	✓	✓
Right seam guide	✓	✓	✓	✓	✓
Set of needles	✓	✓	✓	✓	✓
Tools and accessories in separate box	✓	✓	✓	✓	✓
Dust cover	✓	✓	✓	✓	✓



# Feature overview

## Sewing, quilting and embroidery machines

	General																									
	Space to the right of the Needle (inches)	Weight of the machine (kg)	Centrally Located Colour Touch Screen (inches)	Multi-function Knobs	LED Sewing Light	Automatic Needle Threader	Semi-automatic Needle Threader	Manual Thread Cutter	BERNINA Pinpoint Laser*	WiFi	BERNINA stitch precision <sup>2</sup> Technology	Total Stitch Control	BERNINA Adaptive Thread Tension	BERNINA Dual Feed	Hook System**	Jumbo Bobbin with 70% more Capacity	BERNINA Free Hand System (FHS)	Programmable BERNINA Foot Control	Needle Stop Up/Down	Automatic Presser Foot Lifter	Adjustable Thread Cutter	Lower Thread Sensor	Upper Thread Sensor	Tutorial	On-screen Help	
<b>B 880 PLUS</b>	12	16	7	✓	30	✓	-	3	-	-	✓	✓	✓	RL	✓	✓	✓	✓	✓	✓	✓	✓	✓	✓	✓	
<b>B 790 PRO</b>	10	14	7	✓	30	✓	-	3	✓	✓	✓	✓	B	✓	✓	✓	✓	✓	✓	✓	✓	✓	✓	✓	✓	
<b>B 770 QE PLUS</b>	10	14	7	✓	30	-	✓	3	-	-	✓	✓	B	✓	✓	✓	✓	✓	✓	✓	✓	✓	✓	✓	✓	
<b>B 735</b>	10	14	7	✓	30	-	✓	3	-	-	✓	✓	B	✓	✓	✓	-	✓	✓	✓	✓	✓	✓	✓	✓	
<b>B 700</b>	10	13.5	7	✓	30	-	✓	3	-	-	✓	✓	B	✓	✓	✓	-	✓	✓	✓	-	✓	✓	✓	✓	
<b>B 590</b>	8.5	11.5	4.3	✓	16	-	✓	4	-	-	✓	✓	B	✓	✓	✓	✓	✓	✓	✓	✓	✓	✓	✓	✓	
<b>B 570 QE</b>	8.5	11.5	4.3	✓	12	-	✓	4	-	-	✓	✓	B	✓	✓	✓	✓	✓	✓	✓	✓	✓	✓	✓	✓	
<b>B 540</b>	8.5	11.5	4.3	✓	12	-	✓	4	-	-	✓	✓	B	✓	✓	✓	-	✓	-	✓	✓	-	✓	✓	✓	
<b>B 535</b>	8.5	11.5	4.3	✓	12	-	✓	4	-	-	✓	✓	B	✓	✓	✓	-	✓	-	✓	✓	-	✓	✓	✓	
<b>B 500</b>	8.5	9.6	4.3	✓	12	-	✓	4	-	-	✓	✓	B	✓	✓	✓	-	✓	-	✓	-	✓	✓	✓	✓	
<b>B 485</b>	7	9.5	4.3	✓	8	-	✓	4	-	-	✓	✓	B	✓	✓	✓	✓	✓	-	✓	✓	-	-	✓	✓	
<b>B 480</b>	7	9.5	4.3	✓	8	-	✓	4	-	-	✓	✓	B	✓	✓	✓	✓	✓	-	✓	✓	-	-	✓	✓	
<b>B 475 QE</b>	7	9.5	4.3	✓	8	-	✓	4	-	-	✓	✓	B	✓	✓	✓	-	✓	-	✓	✓	-	-	✓	✓	
<b>B 435</b>	7	9.5	4.3	✓	8	-	✓	4	-	-	✓	✓	B	✓	✓	✓	-	✓	-	✓	-	-	✓	✓	✓	
<b>B 335</b>	6.3	8	-	-	-	-	✓	3	-	-	✓	-	CB	-	✓	✓	-	✓	-	-	-	-	-	-	-	
<b>B 325</b>	6.3	8	-	-	-	-	✓	3	-	-	✓	-	CB	-	✓	-	✓	-	-	-	-	-	-	-	-	

\* Laser classification 1: The lasers of classification 1 are the safest of all laser classes and not harmful to the eye. The possibility of injuries can be ruled out as the radiation is extremely weak. In this case, visible laser radiation is involved.

\*\* RL = Rotary Hook  
B = BERNINA Hook  
CB = CB Hook (central bobbin)

### Standard Accessories

	BERNINA Stitchour App Compatible	Position Recall	Embroidery Module L with Smart Drive Technology (SDT)	Embroidery Module M with Smart Drive Technology (SDT)	BERNINA Precision Presser Feet/Soles Included	Reverse Pattern Foot #11/C	Dual Feed Reverse Pattern Foot #1D	Overlock Foot #2/2A	Buttonhole Foot/Sole #3/3C	Zipper Foot with Slide #3A	Blindstitch Foot #4	Jeans Foot #8/8D	Button Sew-on Foot #18	Open Embroidery Foot/Sole #20/20C/20D	Embroidery Foot #26/26L <sup>6</sup>	Patchwork Foot #37	Sideways Motion Foot #40C	BERNINA Stitch Regulator (BSR) #42	Walking Foot #50	Patchwork Foot #97D	Frearm-slide-on Table	Knee Lever/Free Hand System (FHS)	Dust Cover	Accessory Box	Accessory Bag	
-	✓	✓	-	12	✓	✓	✓	✓	✓	✓	-	✓	✓	✓	-	✓	✓	-	-	✓	✓	3 (o,m,s)	✓	✓	-	B 880 PLUS
✓	✓	✓	-	11	✓	✓	✓	-	✓	✓	✓	-	✓	✓	-	✓	✓	-	-	✓	✓	3 (o,m,s)	✓	✓	-	B 790 PRO
-	✓	opt.	-	7	✓	✓	-	-	✓	✓	-	-	✓	-	-	✓	-	✓	✓	✓	opt.	✓	✓	-	B 770 QE PLUS	
-	✓	opt.	-	6	✓	-	-	-	✓	✓	-	✓	✓	-	-	-	-	✓	-	✓	✓	opt.	✓	✓	-	B 735
-	✓	✓	-	1	-	-	-	-	-	-	-	-	✓	-	-	-	-	-	-	-	opt.	3 (o,m,s)	✓	✓	-	B 700
-	✓	-	✓	9	✓	✓	✓	-	✓	✓	✓	-	✓	✓	-	-	✓	-	-	✓	✓	2 (o,m)	✓	✓	-	B 590
-	✓	-	opt.	7	✓	✓	✓	-	✓	✓	-	-	✓	-	-	-	-	✓	✓	✓	opt.	✓	✓	-	B 570 QE	
-	✓	-	opt.	5	✓	-	✓	-	✓	✓	-	-	✓	-	-	-	-	-	-	✓	✓	opt.	✓	✓	-	B 540
-	✓	-	opt.	5	✓	-	✓	-	✓	✓	-	-	✓	-	-	-	-	-	-	✓	✓	opt.	✓	✓	-	B 535
-	✓	-	✓	1	-	-	-	-	-	-	-	-	-	✓	-	-	-	-	-	-	opt.	2 (o,m)	✓	✓	-	B 500
				5	✓	-	✓	-	✓	✓	✓	-	-	-	-	-	-	-	-	✓	✓	-	✓	✓	-	B 485
				5	✓	-	✓	-	✓	✓	✓	-	-	-	-	-	-	-	-	✓	✓	-	✓	✓	-	B 480
				6	✓	-	✓	-	✓	✓	✓	-	-	-	✓	-	-	-	-	✓	✓	-	✓	✓	-	B 475 QE
				5 <sup>5</sup>	✓	-	✓	(✓) <sup>5</sup>	✓ <sup>1</sup>	✓	✓	-	-	(✓) <sup>5</sup>	-	-	-	-	-	✓	opt.	-	✓	✓	-	B 435
				6	✓	-	✓	-	✓	✓	✓	-	-	✓	-	-	-	-	-	✓	opt.	-	✓	✓	-	B 335
				5	✓	-	✓	✓	✓ <sup>1</sup>	✓	✓	-	-	-	-	-	-	-	-	✓	-	-	-	✓	-	B 325

<sup>5</sup> Depending on the country, presser feet or presser foot soles are part of the standard range. The presser foot soles version includes an additional sole.

<sup>6</sup> Embroidery Foot #26/26L is supplied as standard when purchasing an embroidery module, and not with the machine.

<sup>7</sup> Embroidery Hoops are supplied as standard when purchasing an embroidery module, and not with the machine.

Oval = 255 x 145 mm (10.0" x 5.7"), medium = 130 x 100 mm (5.1" x 3.9"), small = 72 x 50 mm (2.8" x 2")

Not all models and accessories are available in all countries. Depending on the model and country, the embroidery module is either available on option or provided with the machine. We reserve the right to make changes to machine features, equipment, and design. Additional information is available at your local BERNINA store.

## Sewing and Quilting

	Maximum Sewing Speed (stitches per minute)	Maximum Stitch Width (mm)	Maximum Stitch Length (mm)	Adjustable Needle Positions	Security Function for Needle and Stitch Plate	Sideways Motion	Automatic Buttonhole	Manual Buttonhole / Length Measuring System	Adjustable Buttonhole	Personal Memory	History Function	Stitch Designer (most recently used stitch patterns)	Creative Consultant Sewing	Pattern Begin	Pattern End	Mirror-image function	Elongation	Triple Stitch	Programmable Securing Function	BSR Enabled	BSR 3 Mode	KickStart Function	Start/Stop Burton	Presser Foot Hover Function (stitching without foot control)	Total Number of Sewing Stitch Patterns (incl. alphabets)	Alphabets / Monograms	Decorative Stitches	Burton Sew-On Program	Buttonholes / Eyelets	Practical Stitches	Sideways Motion Stitches	Quilting Stitches	Darning Programs	Maxi
1200	9	6	11	✓	✓	✓	✓	✓	✓	15	✓	✓	✓	✓	✓	✓	✓	✓	✓	✓	✓	✓	✓	1764	10/1	632	1	17/2	38	109	69	2	1000	
1000	9	6	11	✓	✓	✓	✓	✓	✓	15	✓	✓	✓	✓	✓	✓	✓	✓	✓	✓	✓	✓	✓	2040	9/1	700	1	16/2	38	139	70	2	1000	
1000	9	6	11	✓	-	✓	✓	✓	✓	15	-	✓	✓	✓	✓	✓	✓	✓	✓	✓	✓	✓	✓	1809	9	500	1	16/2	38	-	74	2	1000	
1000	5,5	6	11	✓	-	✓	✓	✓	✓	15	-	✓	✓	✓	✓	✓	✓	✓	✓	-	-	✓	✓	1255	6	350	1	13/2	32	-	29	2	1000	
-	-	-	-	-	-	-	-	-	-	-	-	-	-	-	-	-	-	-	-	-	-	✓	-	-	-	-	-	-	-	-	-	-	-	1000
1000	9	6	11	✓	-	✓	✓	✓	✓	-	-	✓	✓	✓	✓	✓	✓	✓	✓	✓	-	-	✓	✓	1774	9	499	1	16/2	38	-	60	2	1000
1000	9	6	11	✓	-	✓	✓	✓	✓	-	-	✓	✓	✓	✓	✓	✓	✓	✓	✓	-	-	✓	✓	1450	8	450	1	14/2	35	-	74	2	1000
1000	9	6	11	✓	-	✓	✓	✓	✓	-	-	✓	✓	✓	✓	-	-	✓	✓	-	-	✓	-	1048	5	300	1	12/2	30	-	43	2	1000	
1000	5,5	6	11	✓	-	✓	✓	✓	✓	-	-	✓	✓	✓	✓	-	-	✓	✓	-	-	✓	-	1048	5	300	1	12/2	30	-	45	2	1000	
-	-	-	-	-	-	-	-	-	-	-	-	-	-	-	-	-	-	-	-	-	-	✓	-	-	-	-	-	-	-	-	-	-	-	1000
900	5,5	6	11	✓	-	✓	✓	✓	✓	-	-	✓	✓	✓	✓	✓	-	✓	✓	-	-	✓	-	994	5	250	1	9/2	29	-	28	2		
900	9	6	11	✓	-	✓	✓	✓	✓	-	-	✓	✓	✓	✓	✓	-	✓	✓	-	-	✓	-	994	5	250	1	9/2	29	-	28	2		
900	5,5	6	11	✓	-	✓	✓	-	✓	-	-	✓	✓	✓	✓	-	-	✓	✓	-	-	✓	-	840	4	200	1	8/2	29	-	41	2		
900	5,5	6	11	✓	-	✓ <sup>1</sup>	✓	-	✓	-	-	✓	✓	✓	✓	-	-	-	-	-	-	✓	-	650	3	150	1	7/2	29	-	14	2		
900	5,5	5	9	-	-	✓	✓	-	-	-	-	-	✓	✓	-	-	-	-	-	-	-	✓	-	221	2	91	1	4/1	20	-	12	1		
900	5,5	5	9	-	-	✓ <sup>1</sup>	✓	-	-	-	-	-	✓	-	-	-	-	-	-	-	-	✓	-	97	1	23	1	1	15	-	3	1		

<sup>1</sup> The Buttonhole Foot with Slide #3A is needed for the automatic buttonhole. With the B 435 with presser foot soles (soles version) and the B 325, this foot is not included in the standard delivery.



Embroidery <sup>2</sup>																														
	Minimum Embroidery Speed (Stitches per minute)	Freearm Embroidery	Built-in Embroidery Designs	Embroidery Alphabets	Customisable Quilt Designs (.bqm files)	On-screen Editing of Designs	Align/Distribute Embroidery Designs	Endless Embroidery	Shape Designer	Colour Wheel	WordArt	Multi-line Lettering and Align Function	Drag & Drop	Absolute Check Design Positioning	4-Point Placement with Morphing	2-Point Placement	Group/Ungroup	Undo/Redo	Basting	Personal Memory for Saving Embroidery Designs	Programmable Jump Stitch Cutting	Smart Secure	Invisible Secure	Thread Away Mode	Creative Consultant Embroidery	Emroider Sewing Stitches	BQM Format Reading <sup>4</sup>	Embroidery Design Reading	Automatic Hoop Recognition	
400 x 260	✓	462	21	-	✓	-	✓	✓	✓	✓	-	✓	✓	-	✓	✓	✓	✓	✓	✓	✓	✓	✓	✓	✓	✓	-	✓	✓	B 880 PLUS
400 x 210	✓	500	25	76	✓	✓	✓	✓	✓	✓	✓	✓	✓	✓	✓ <sup>3</sup>	✓	✓	✓	✓	✓	✓	✓	✓	✓	✓	✓	✓	✓	✓	B 790 PRO
400 x 210	✓	275	8	-	✓	-	-	-	-	✓	-	✓	✓	-	✓ <sup>3</sup>	✓	-	✓	✓	✓	✓	✓	✓	-	-	✓	-	✓	✓	B 770 QE PLUS
400 x 210	✓	250	6	-	✓	-	-	-	-	-	-	✓	✓	-	✓ <sup>3</sup>	✓	-	✓	✓	✓	✓	✓	✓	✓	-	✓	-	✓	✓	B 735
400 x 210	✓	320	18	-	✓	-	✓	-	✓	✓	-	✓	✓	-	✓	✓	✓	✓	✓	✓	✓	✓	✓	✓	-	✓	-	✓	✓	B 700
400 x 150	✓	275	8	-	✓	-	✓	-	✓	✓	-	✓	✓	-	✓	✓	✓	✓	✓	✓	✓	✓	✓	✓	✓	✓	-	✓	-	B 590
400 x 150	✓	250	7	-	✓	-	-	-	-	✓	-	✓	✓	-	-	-	-	✓	✓	✓	✓	✓	✓	-	-	✓	-	✓	-	B 570 QE
400 x 150	✓	50	4	-	✓	-	-	-	-	✓	-	✓	✓	-	-	-	-	✓	✓	✓	✓	✓	-	-	-	✓	-	✓	-	B 540
400 x 150	✓	50	4	-	✓	-	-	-	-	✓	-	✓	✓	-	-	-	-	✓	✓	✓	✓	✓	-	-	-	✓	-	✓	-	B 535
400 x 150	✓	275	8	-	✓	-	✓	-	✓	✓	-	✓	✓	-	✓	✓	✓	✓	✓	✓	✓	✓	✓	✓	-	✓	-	✓	-	B 500
No embroidery function																												B 485		
No embroidery function																												B 480		
No embroidery function																												B 475 QE		
No embroidery function																												B 435		
No embroidery function																												B 335		
No embroidery function																												B 325		

<sup>2</sup> Models with an embroidery function need an additional embroidery module for embroidery purposes, which is not included in the standard delivery in all countries.

<sup>3</sup> Including Lock Scaling function

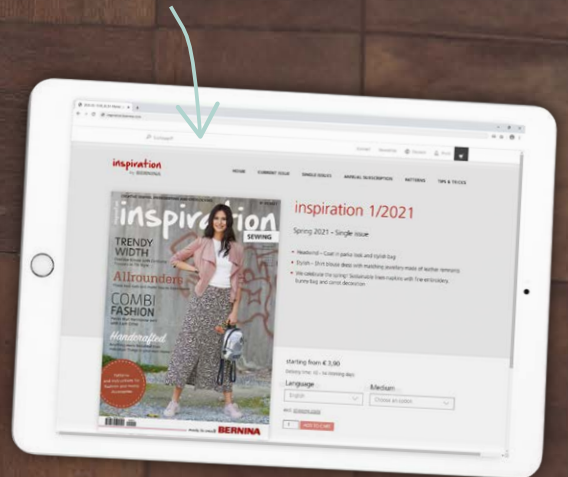
<sup>4</sup> EXP, DST, PES, PEC, JEF, SEW, PCS, XXX

# You can find even more ideas online!

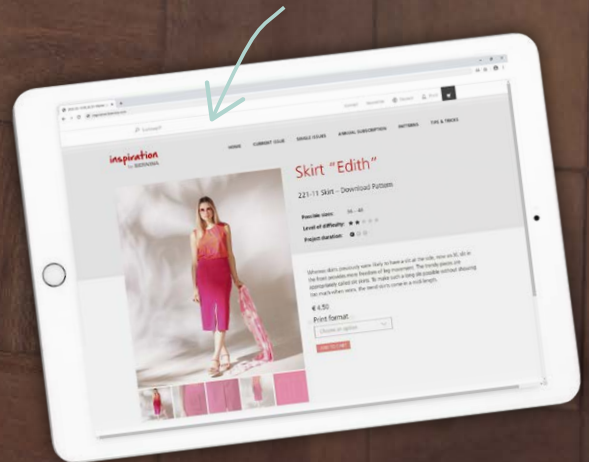
Are you looking for new sewing ideas and patterns? Then go to [inspiration.bernina.com](https://inspiration.bernina.com)!

There, you can find great patterns and instructions for women's and children's fashion as well as accessories and home decorations to download. The magazine is also available as an e-magazine! Visit us and sign up for the newsletter to make sure you don't miss anything!

*Issues available as an e-magazine*



*Individual patterns*



LOOKING FOR  
A NEW SEWING  
PROJECT?

[inspiration.bernina.com](https://inspiration.bernina.com)



Follow us on Instagram at  
[inspiration.sewing.magazine](https://www.instagram.com/inspiration.sewing.magazine)